

[Click on your shoe size and print labeled pages](#)

visit our **Customizing Page** for more information on the perfect fit and style for you

page 2 explains using the OESH Create Sole for the mule pattern

size 5, pages 3-4

size 6, pages 5-6

size 7, pages 7-8

size 8, pages 9-10

size 9, pages 11-12

size 10, pages 13-15

size 11, pages 16-18

size 12, pages 19-21

size 13, pages 22-24

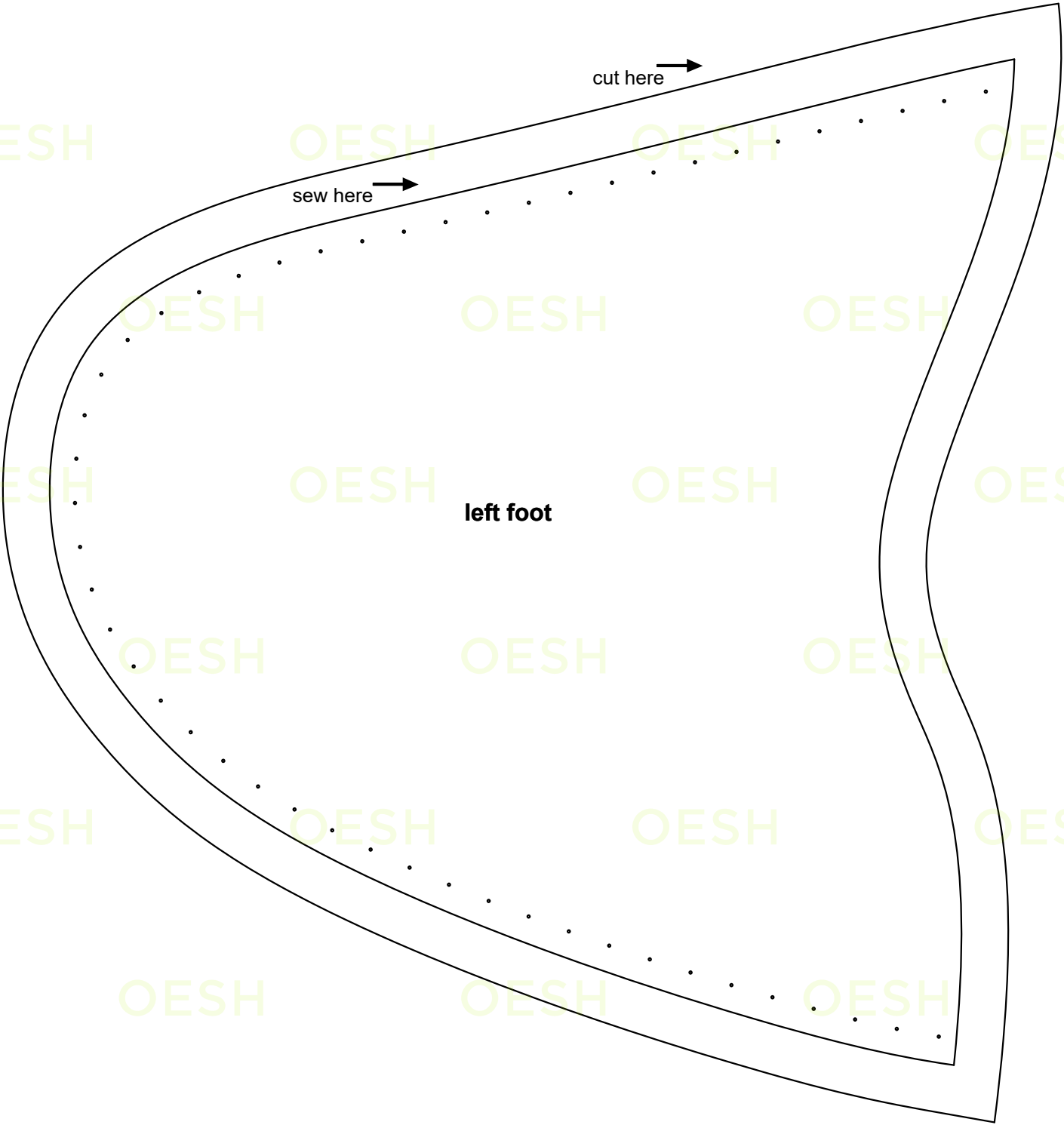
[Enjoy making your OESH Creates!](#)

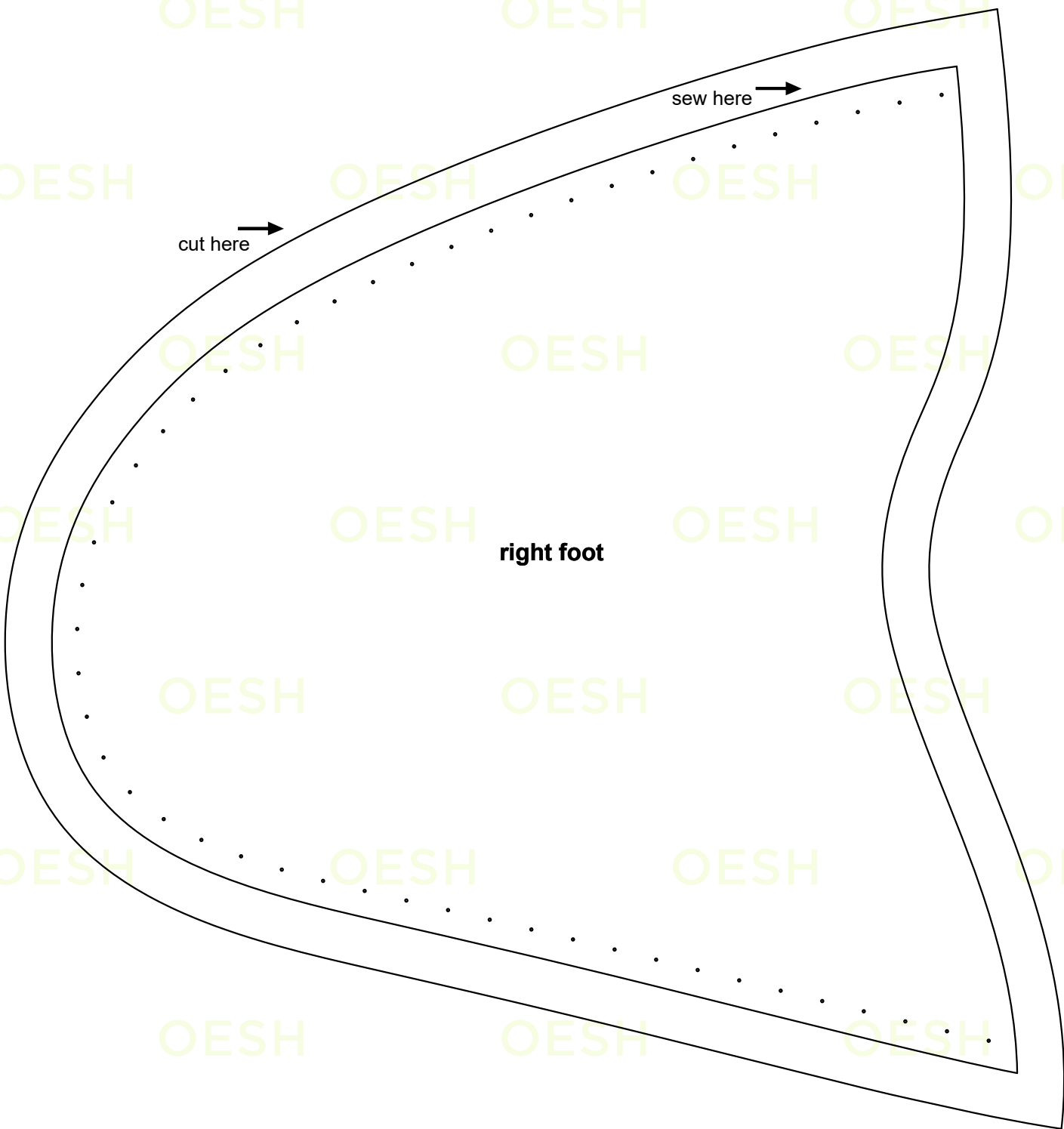
Please share your experience on our **Community Forum**

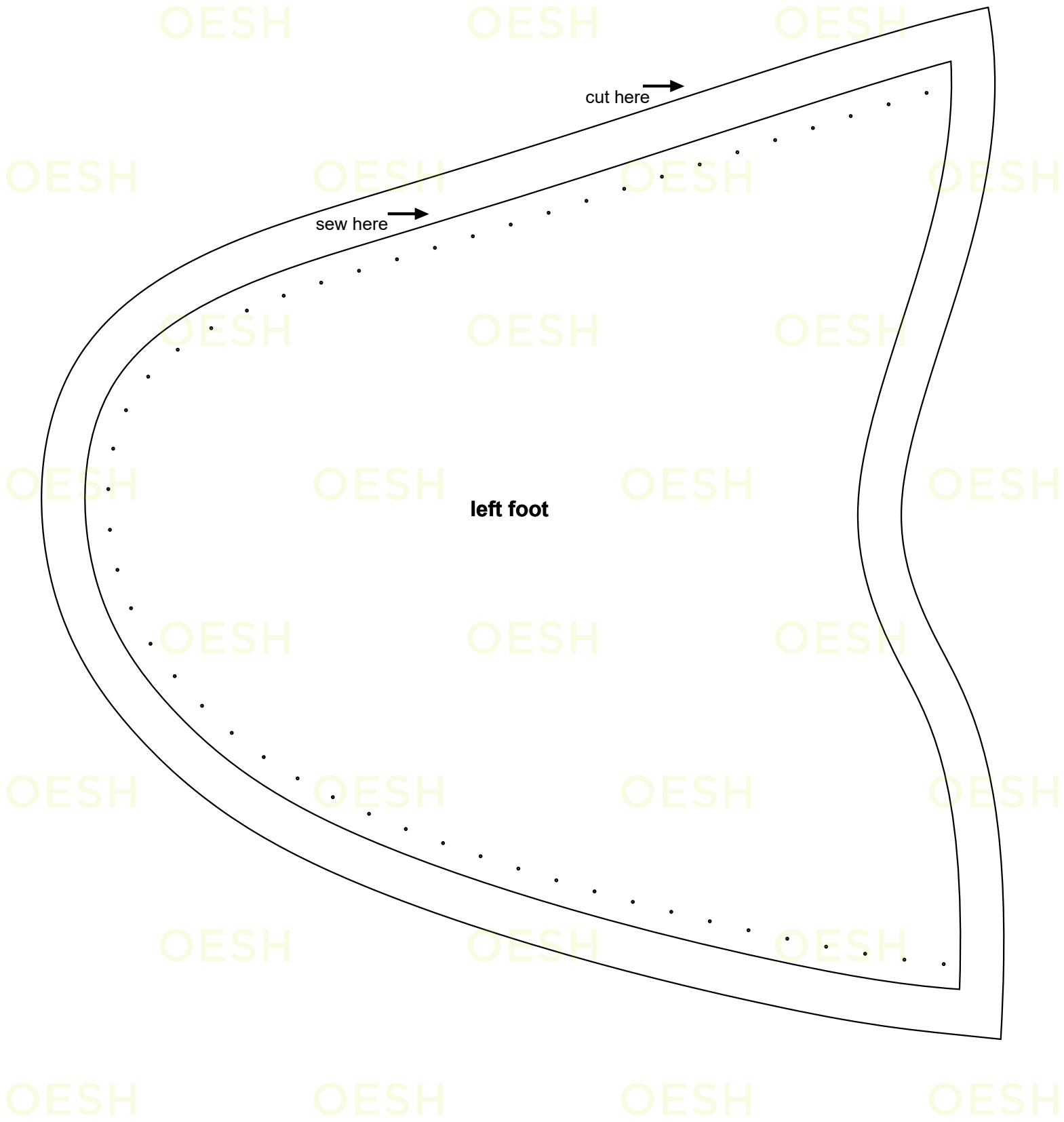


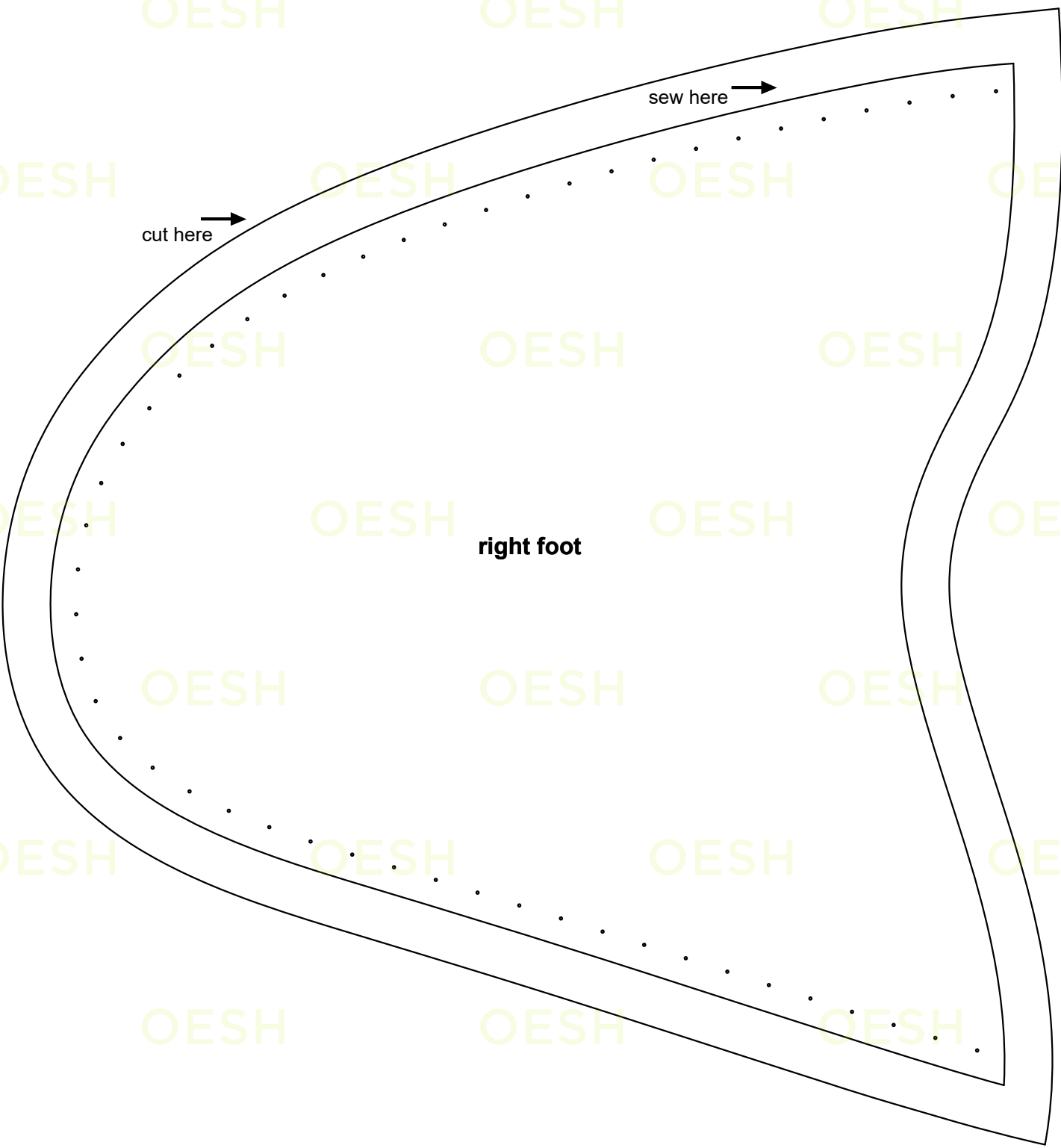
start here

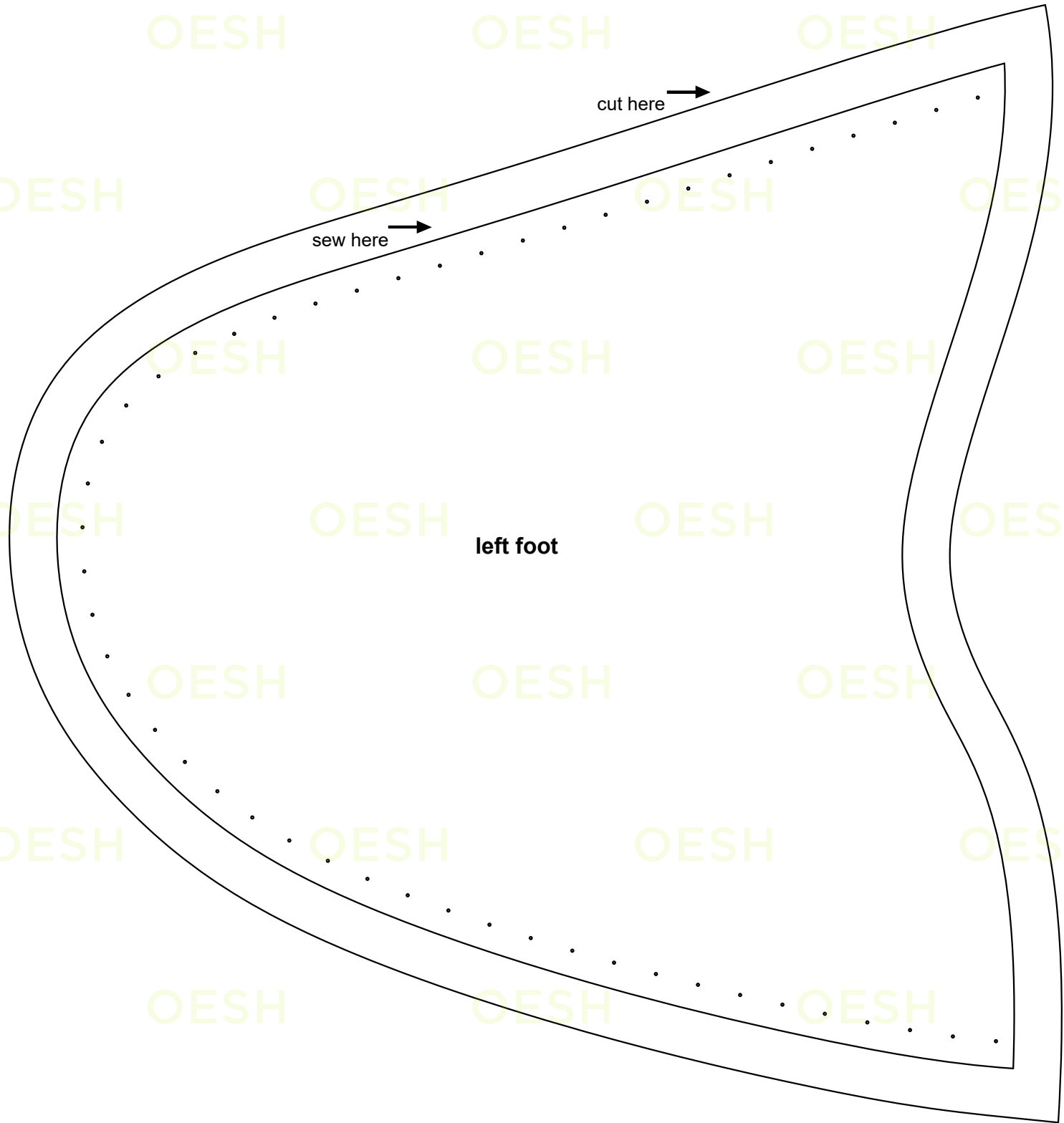
end here

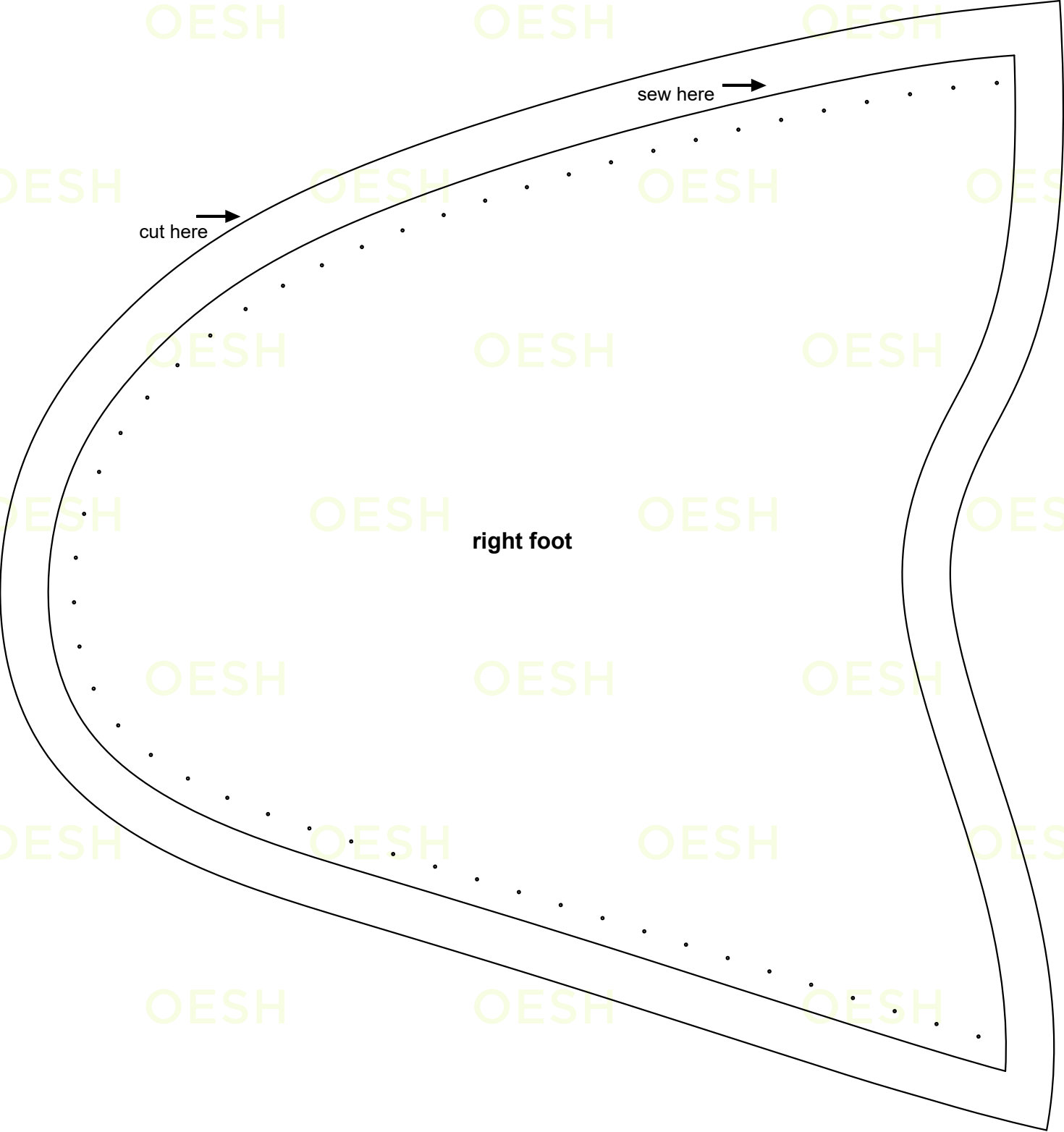


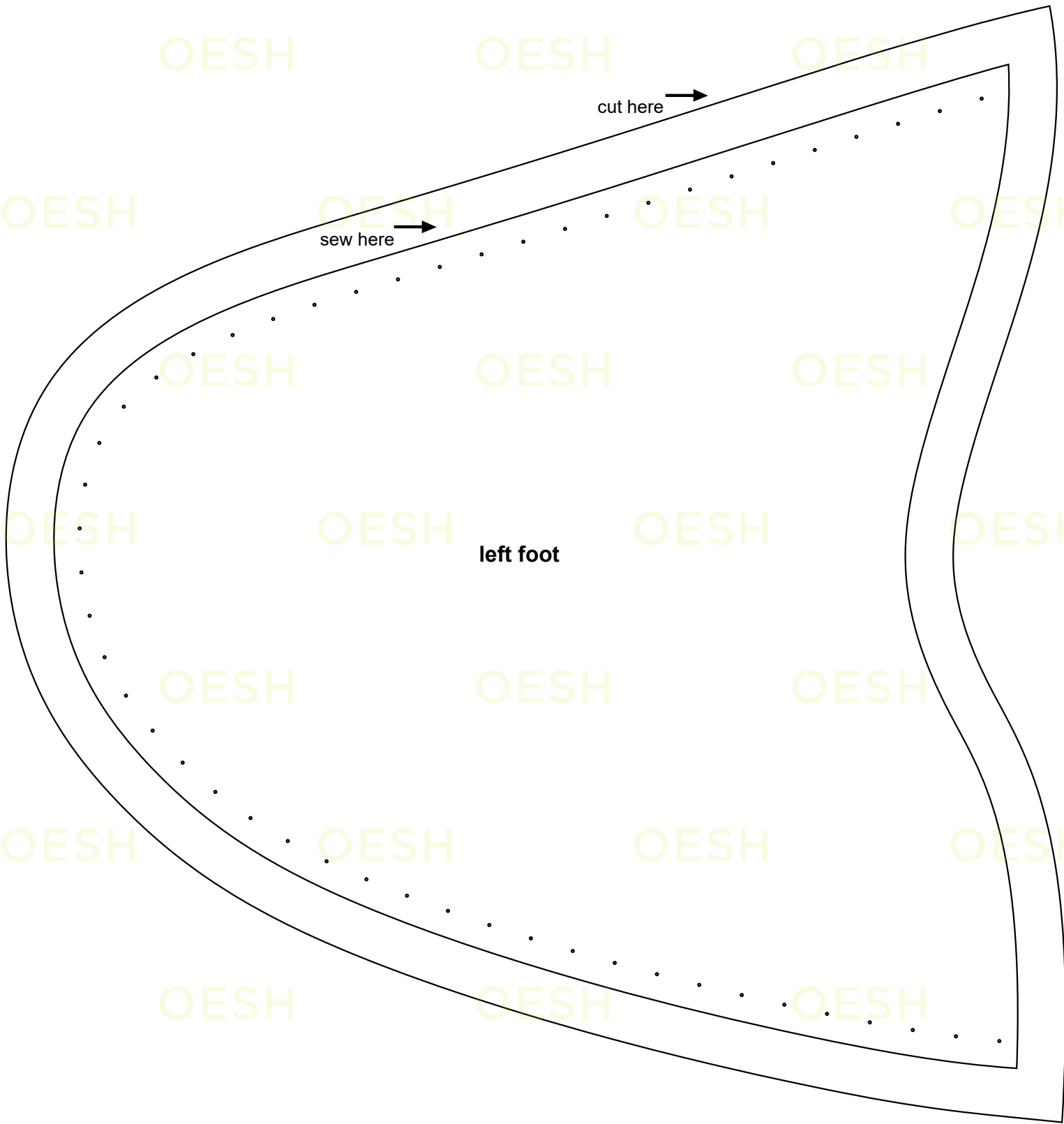


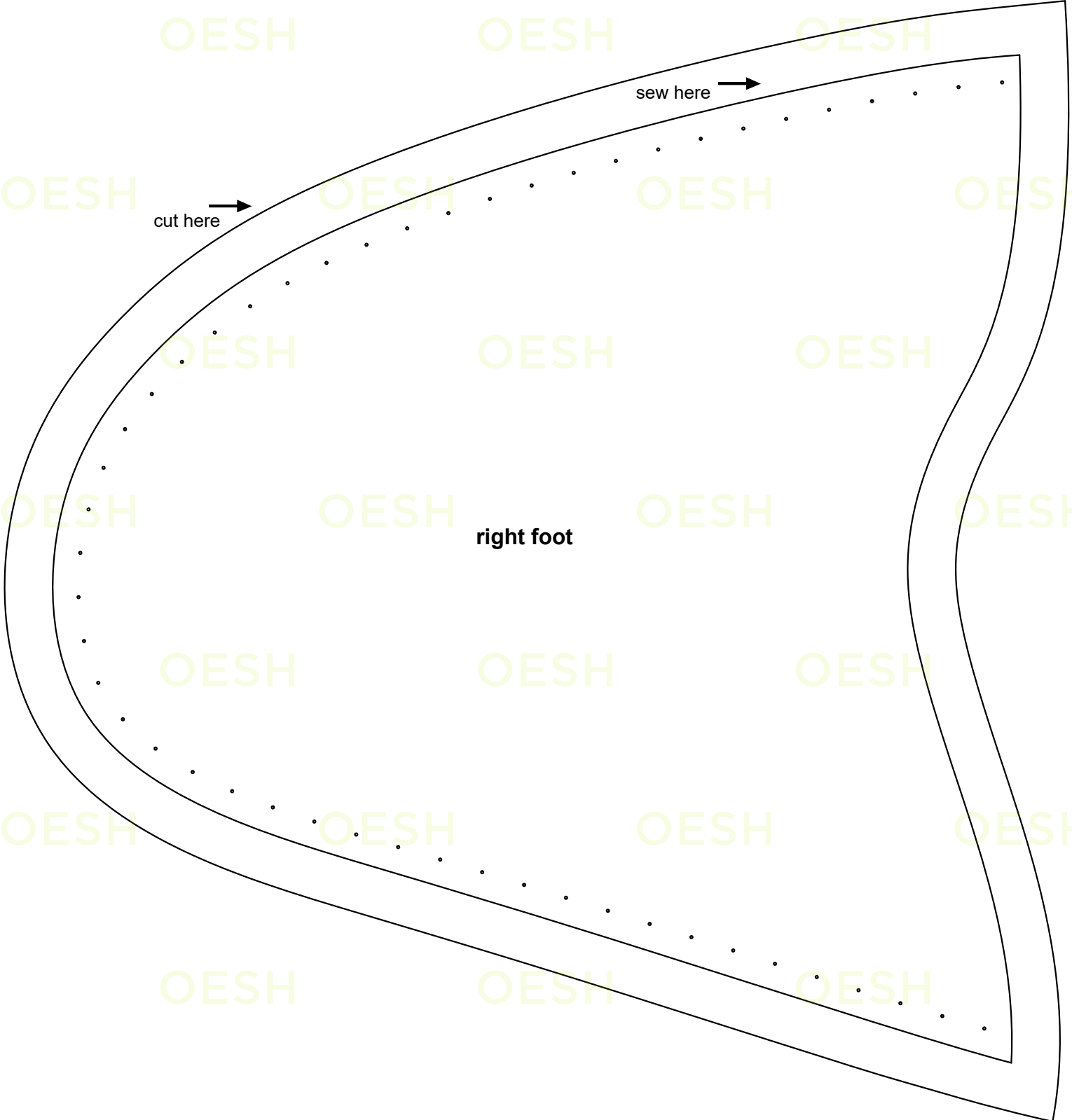


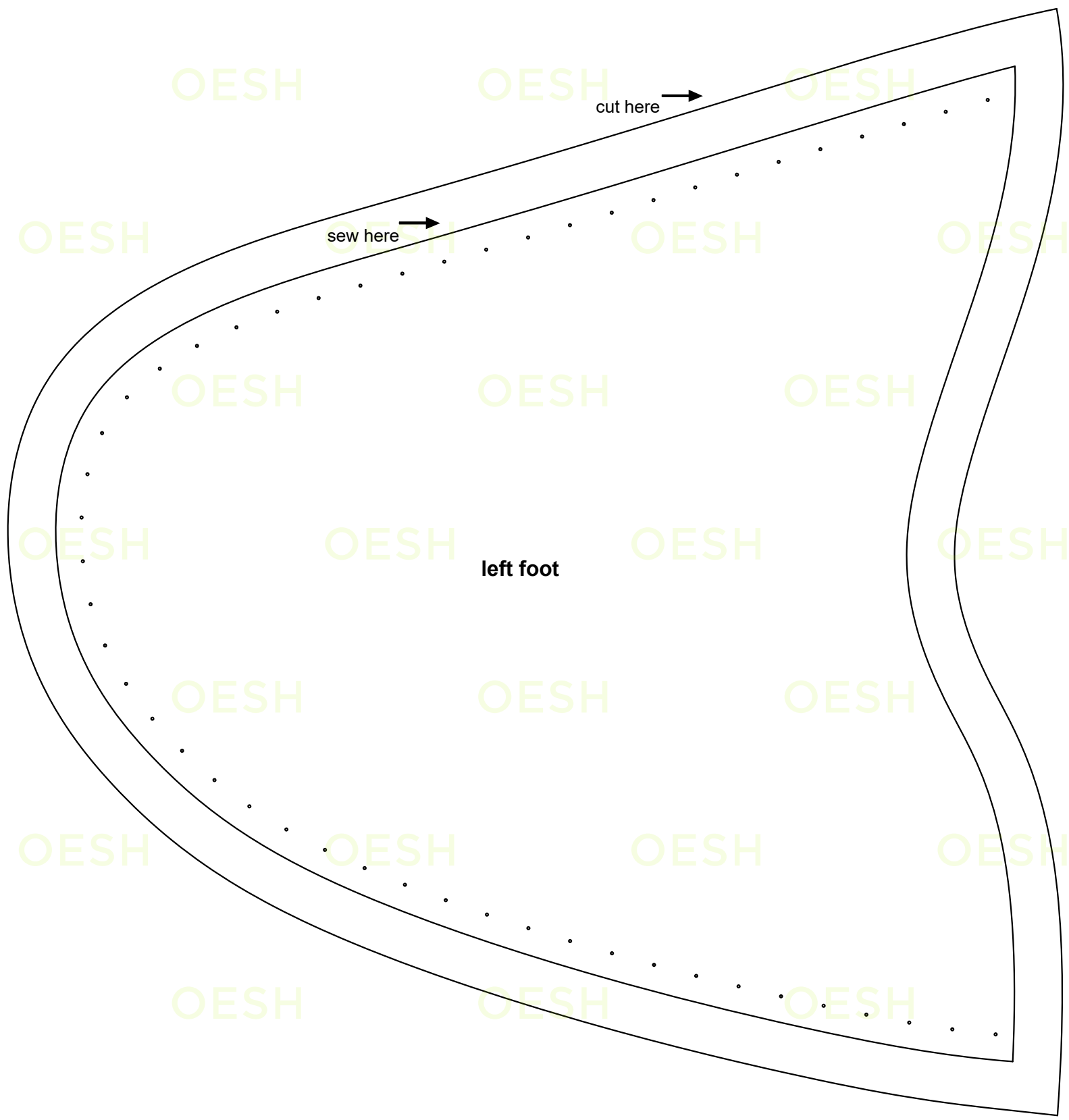


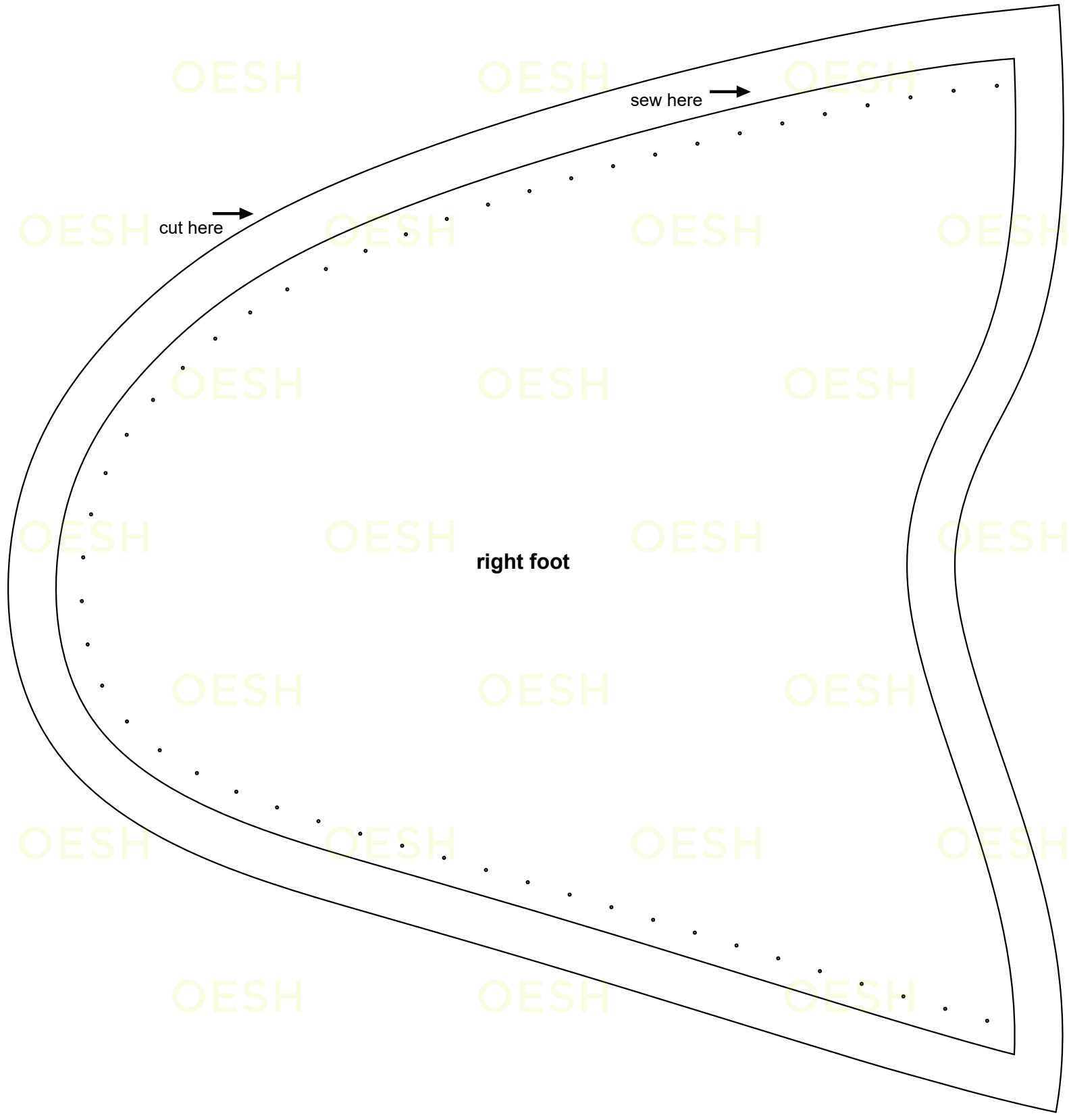


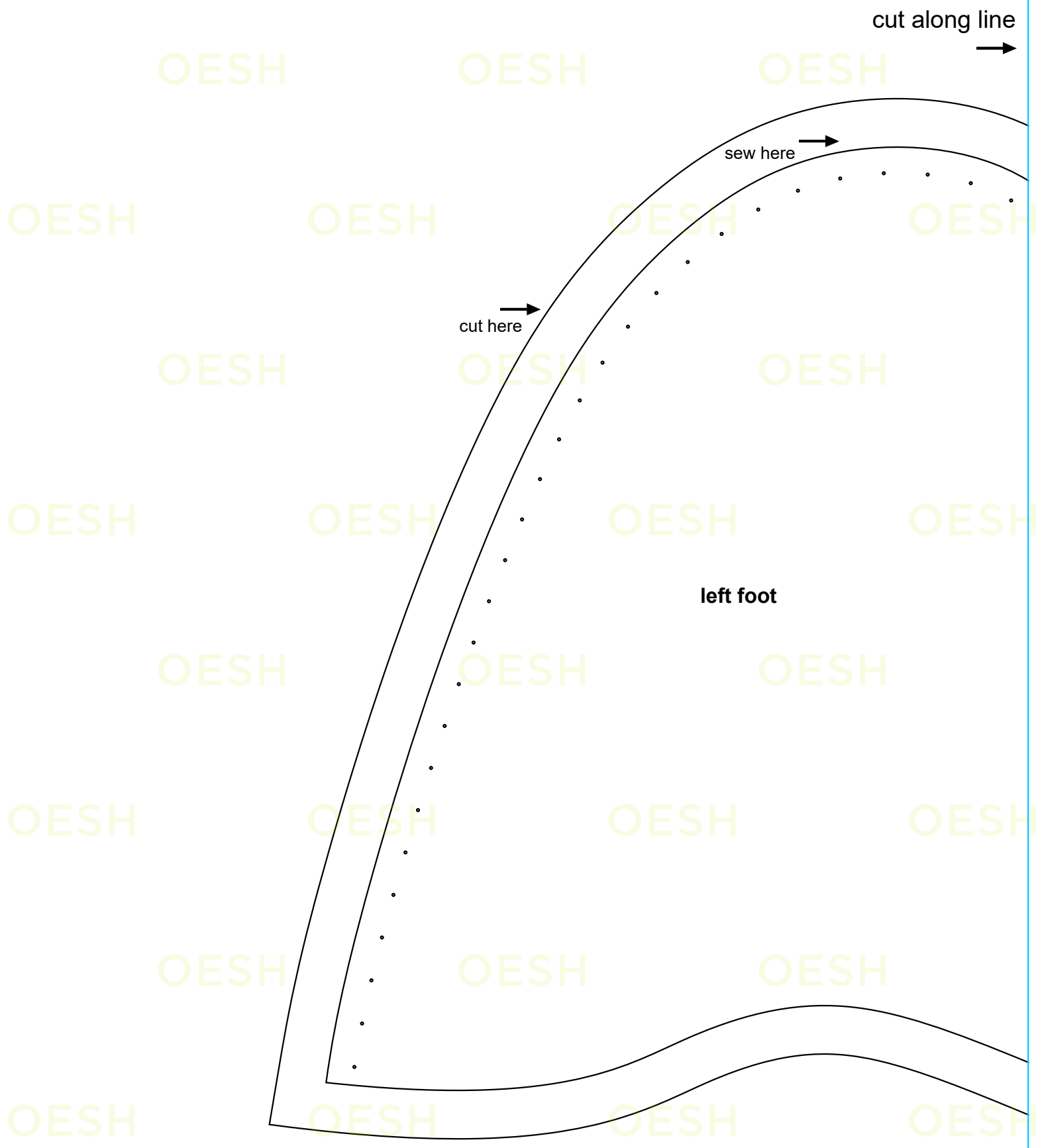






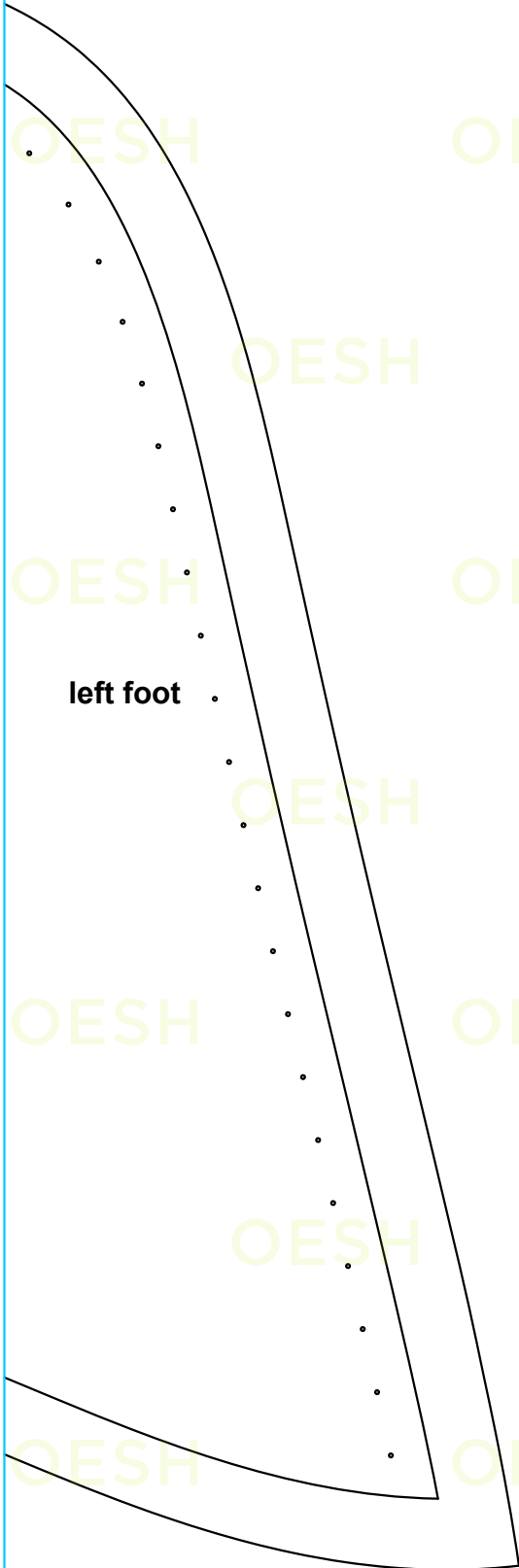




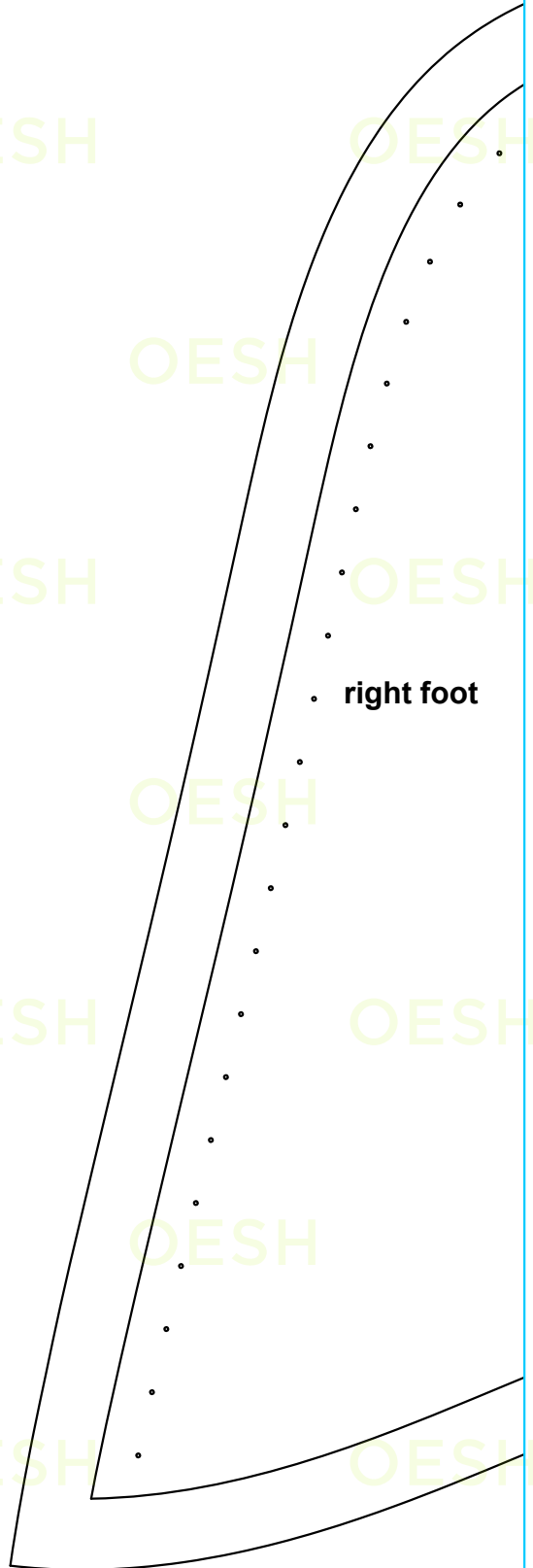


attach pages along line ←

attach pages along line →



left foot



right foot

cut along line



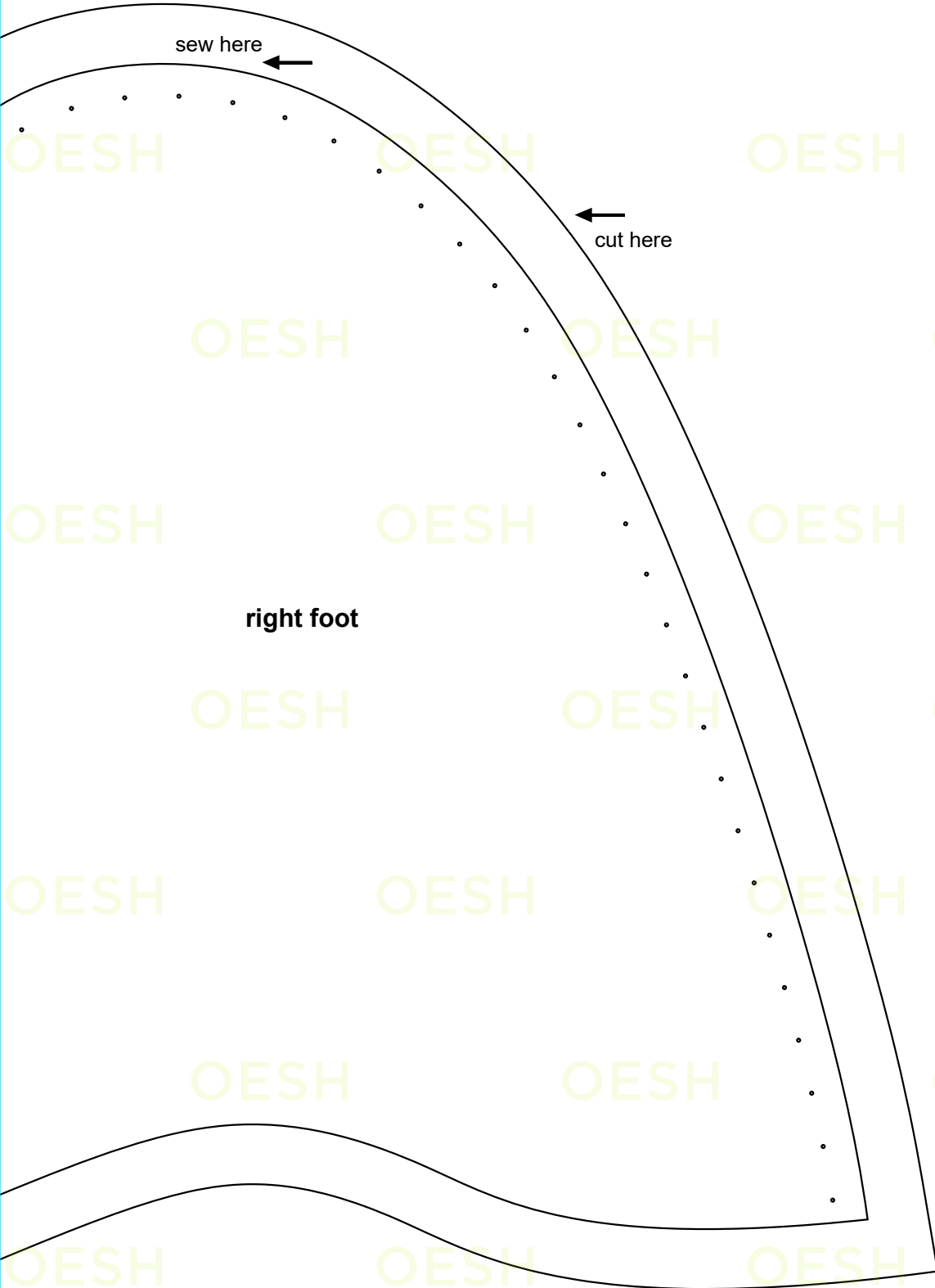
sew here

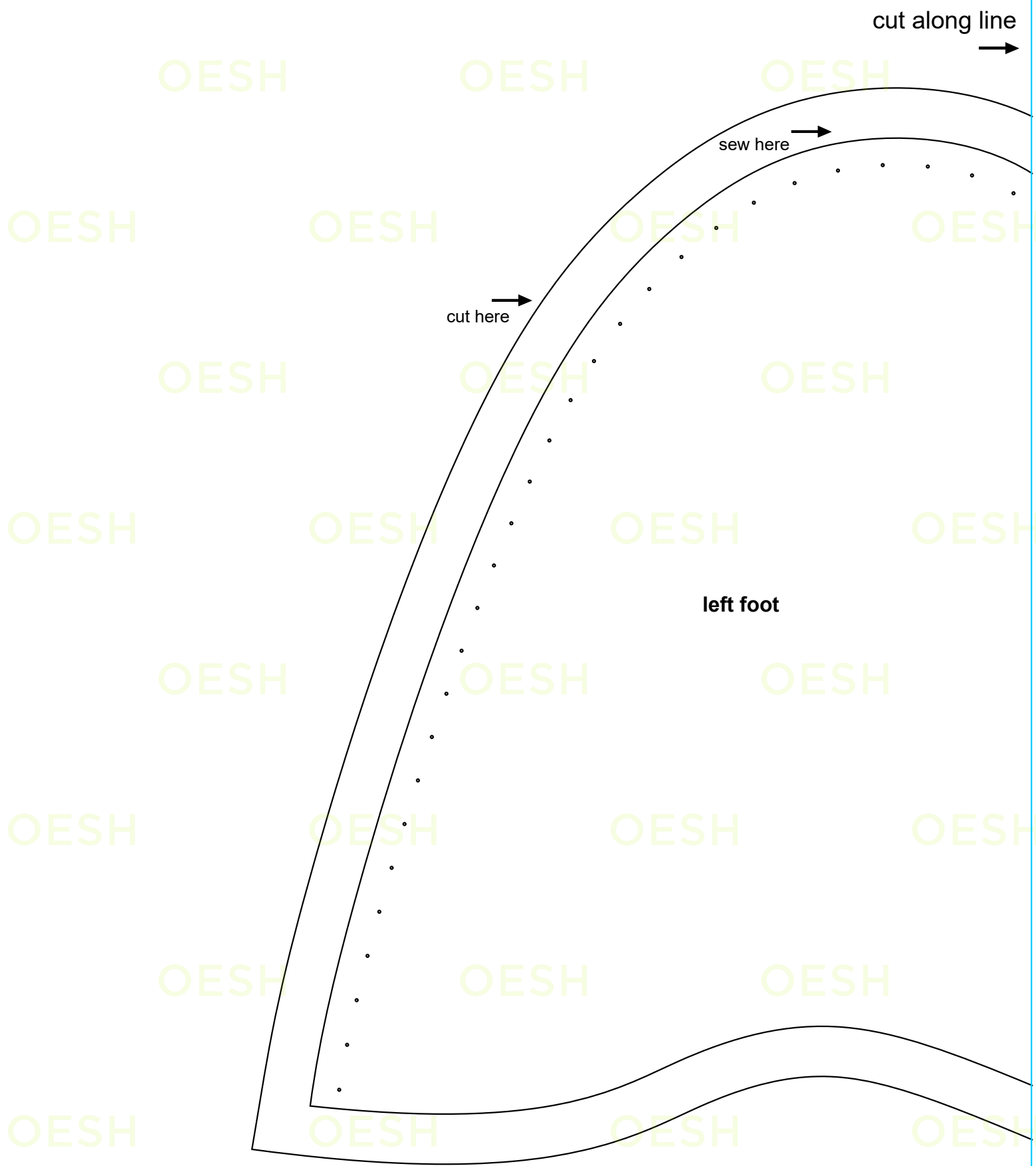


cut here



right foot

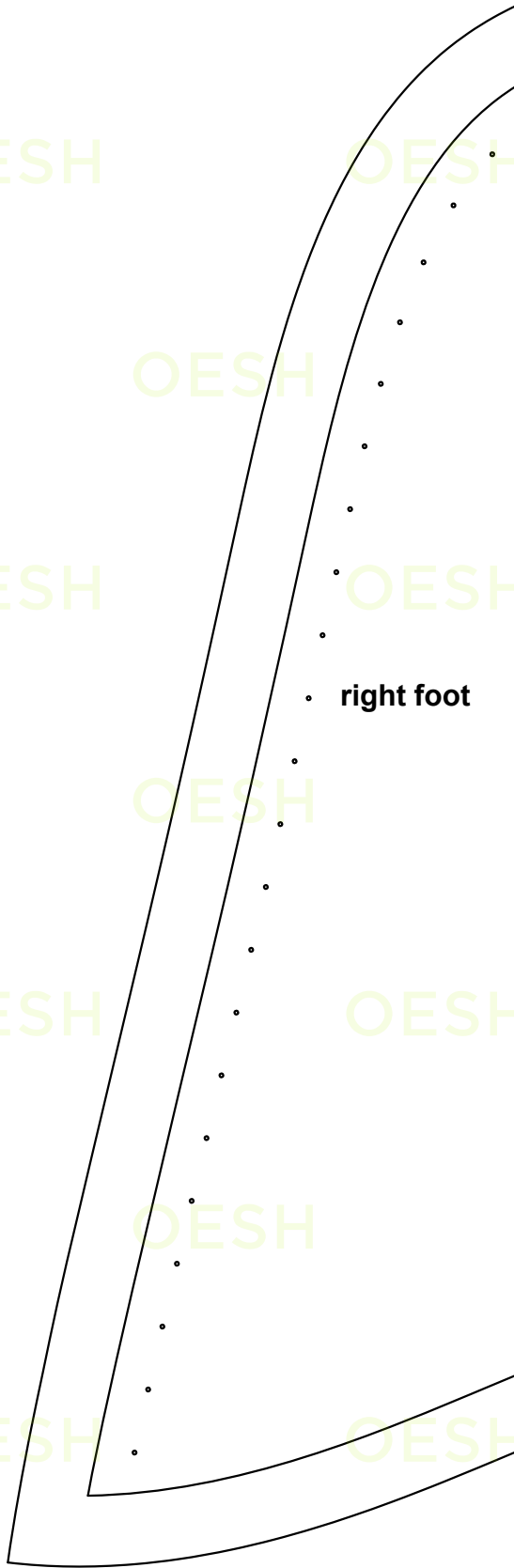
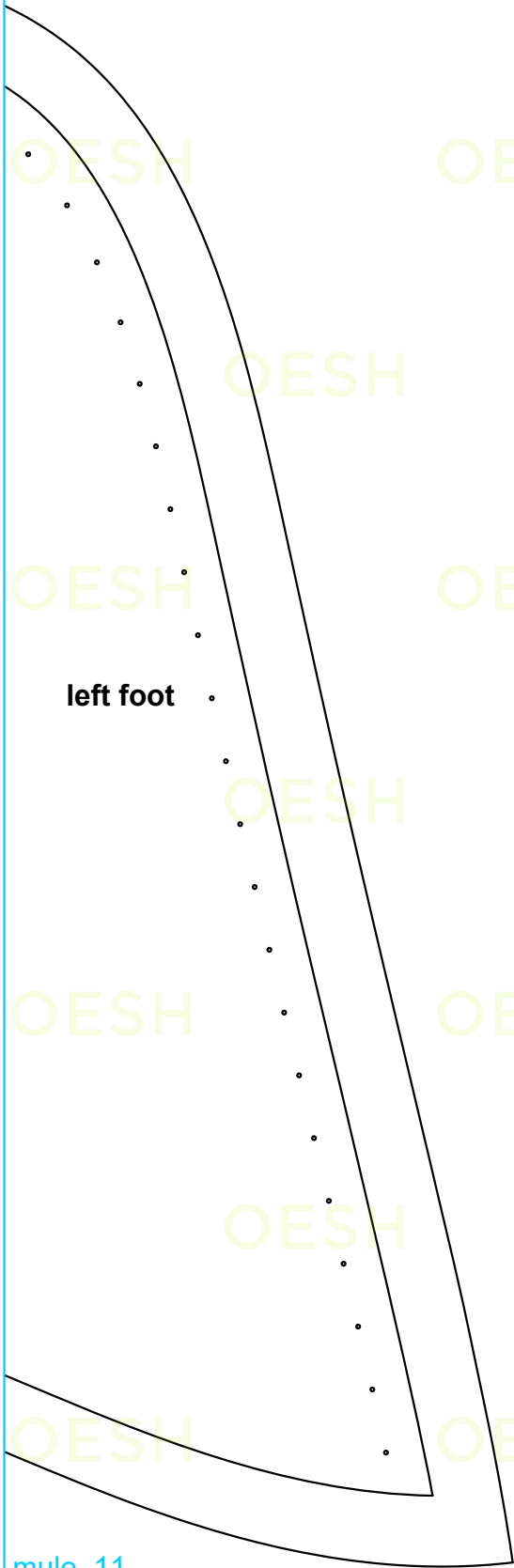




attach pages along line



attach pages along line

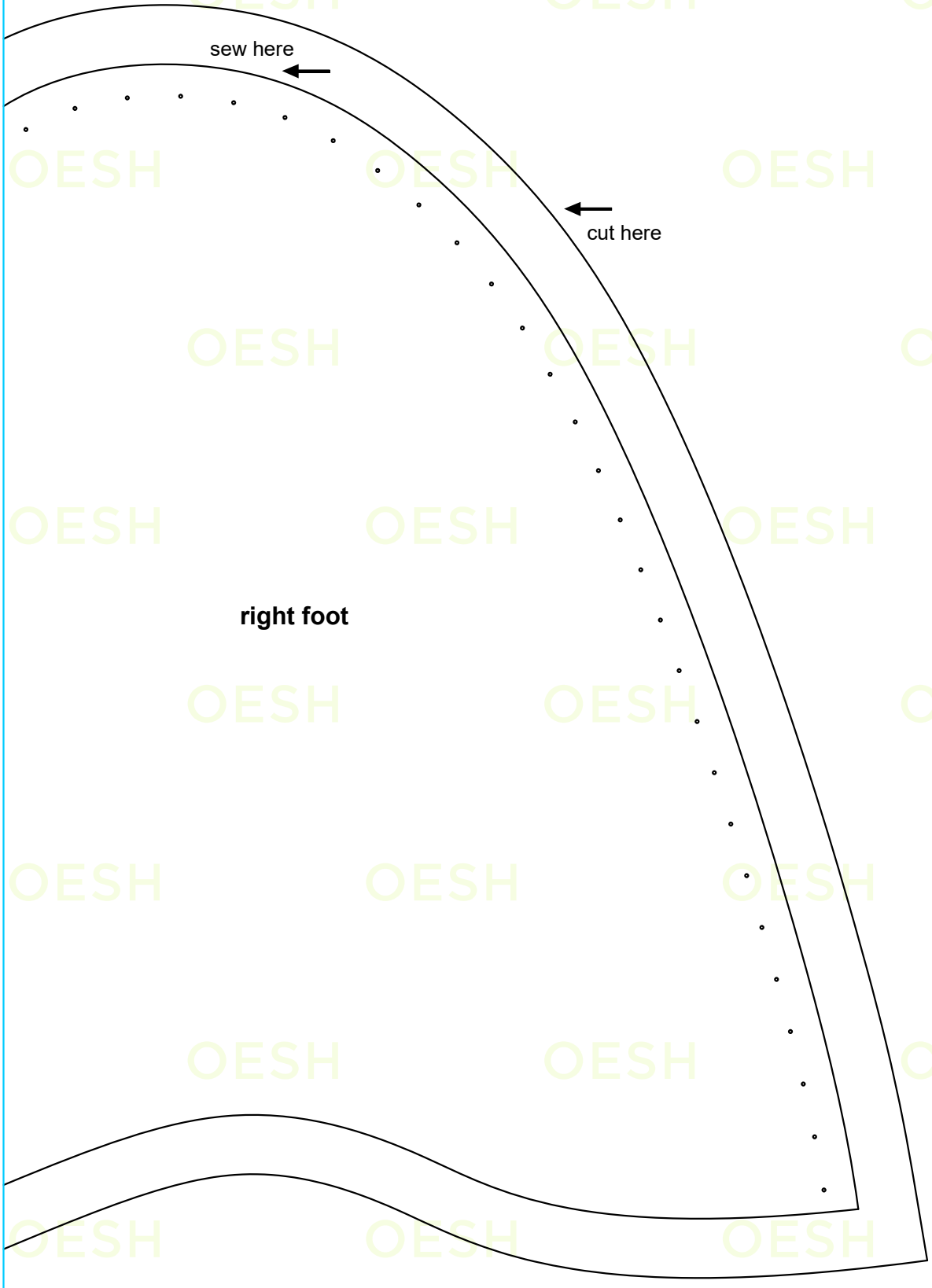


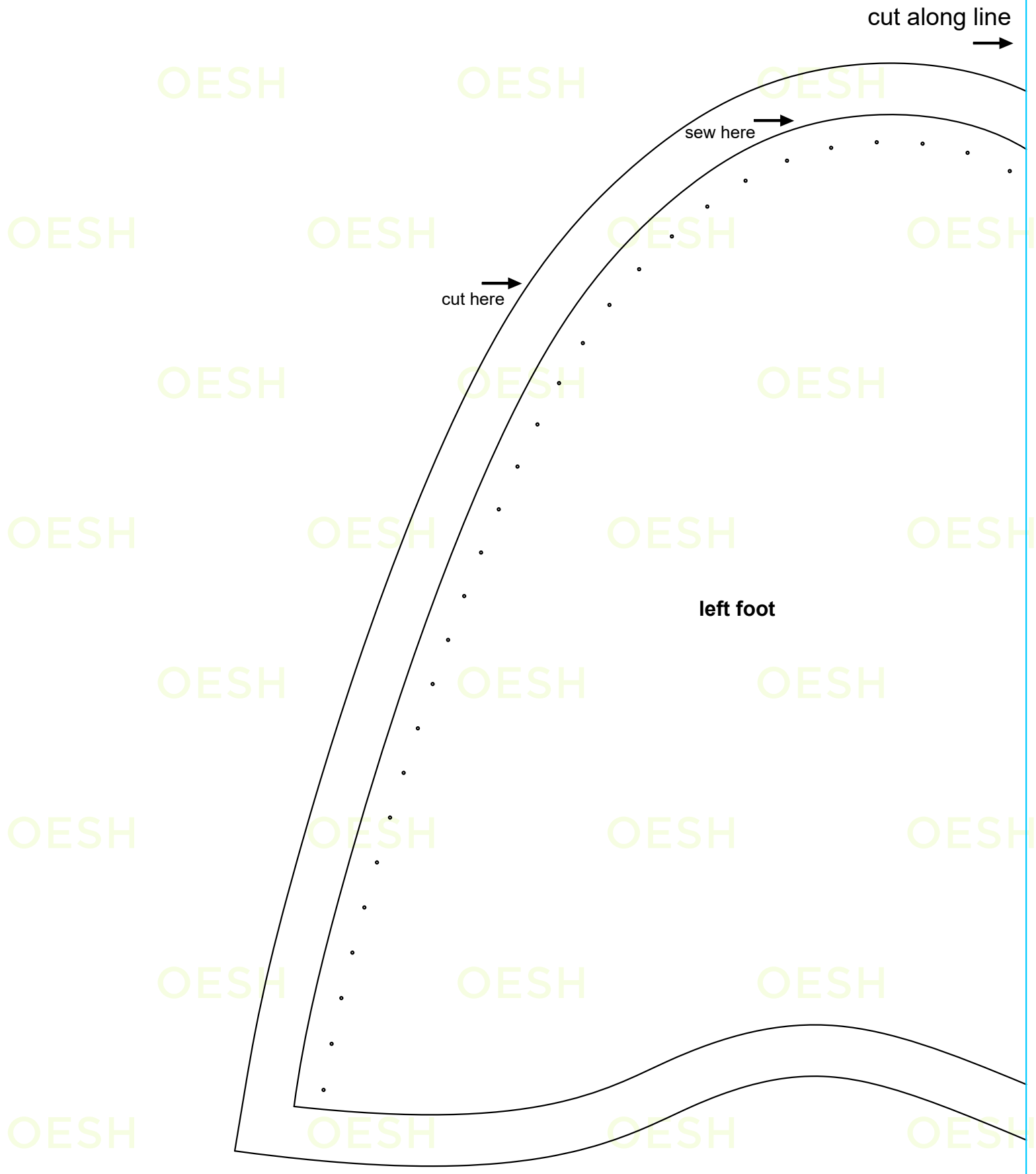
cut along line
←

sew here
←

cut here
←

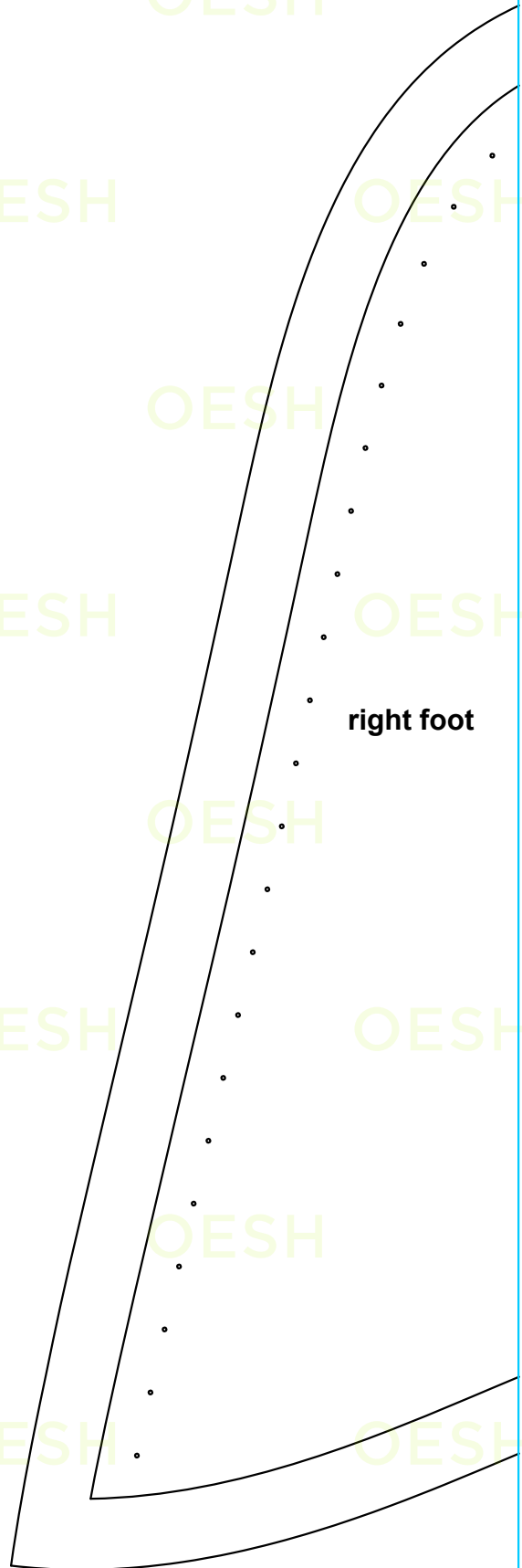
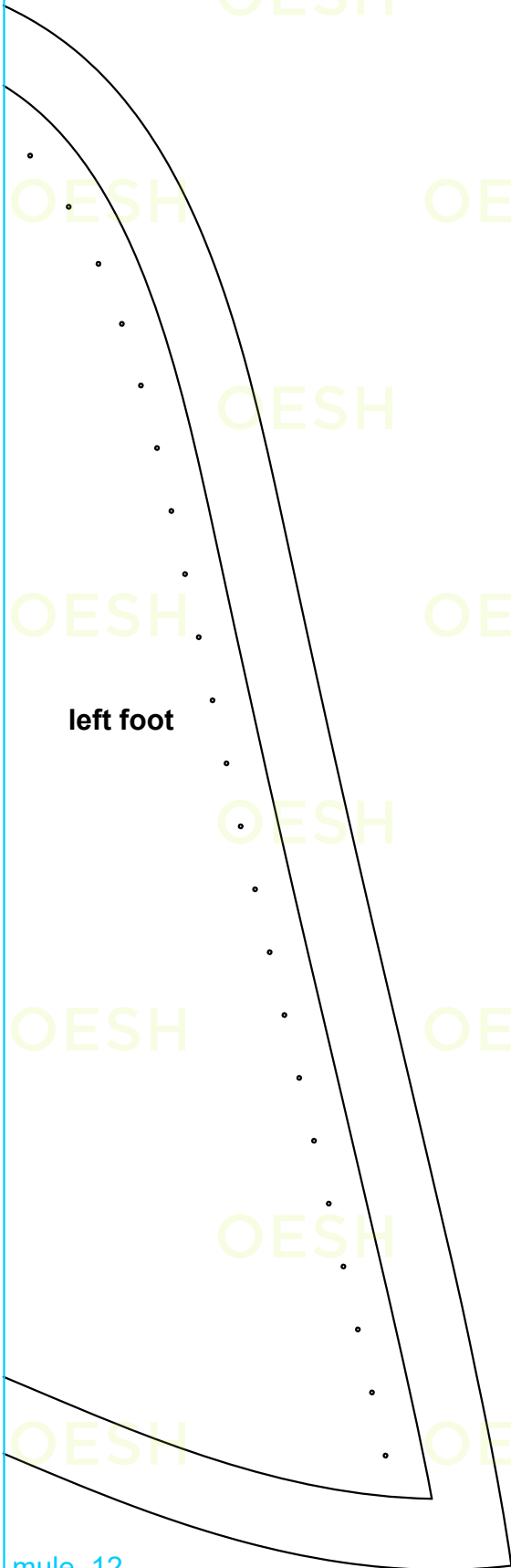
right foot





attach pages along line ←

attach pages along line →



cut along line



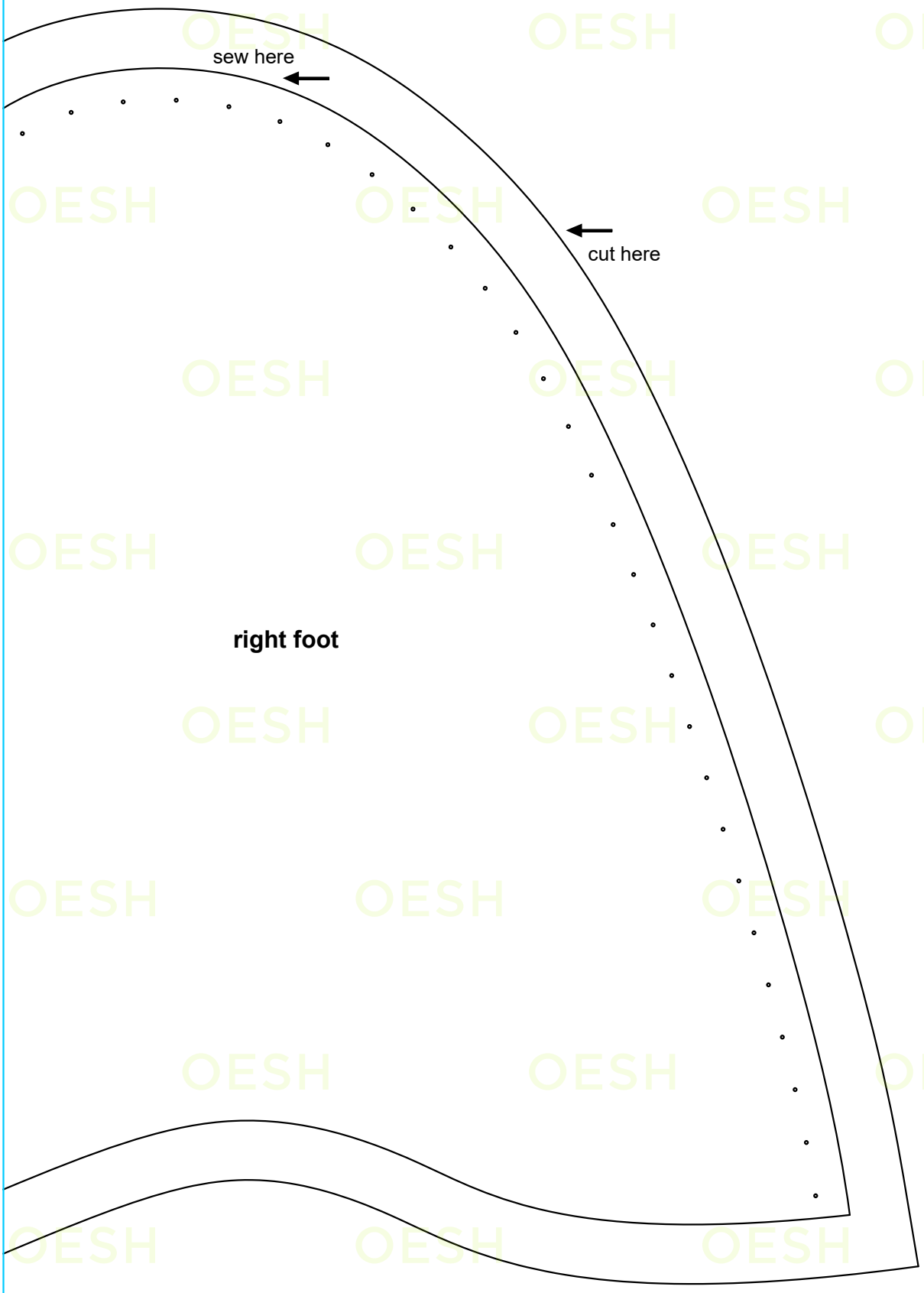
sew here

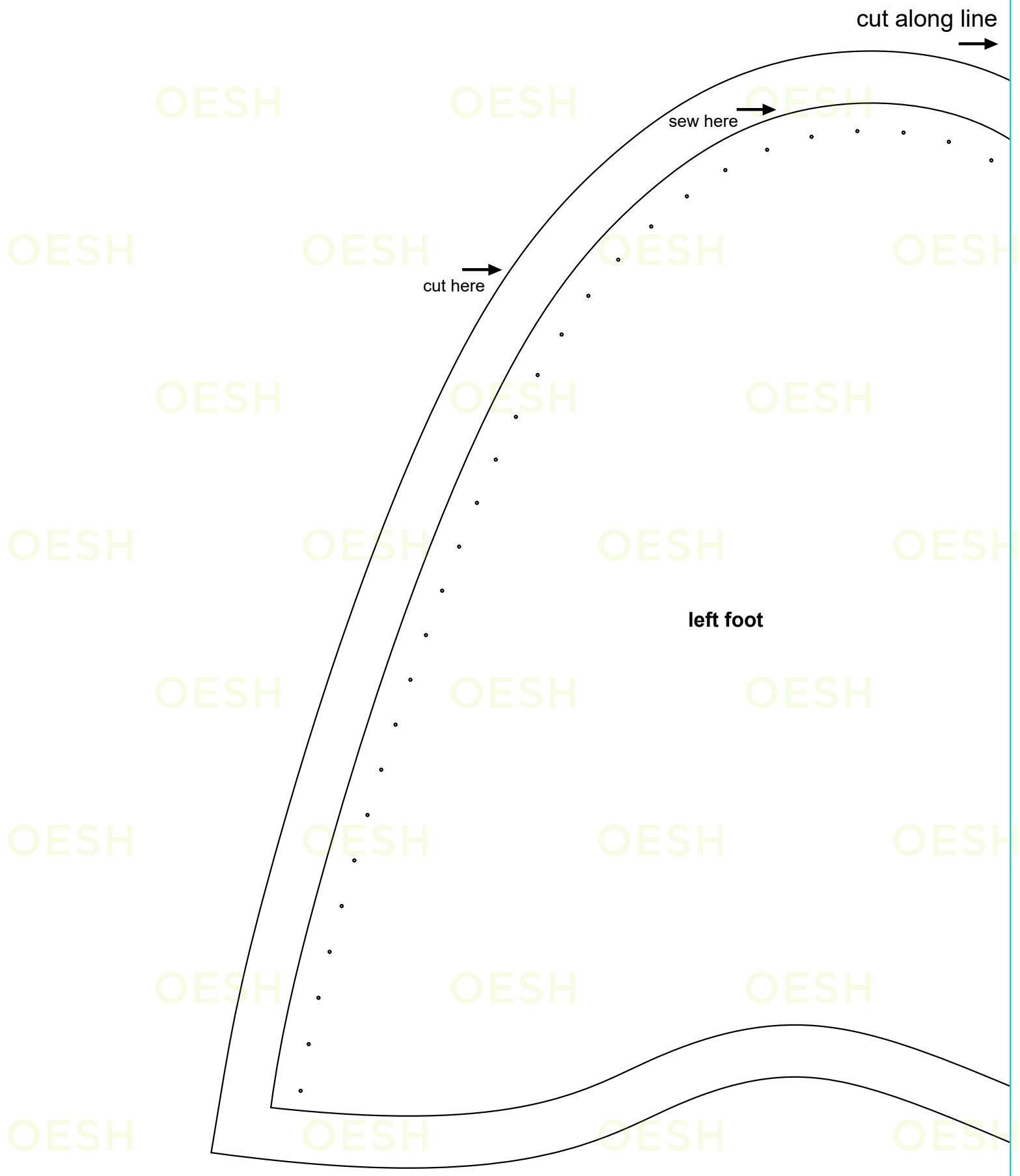


cut here



right foot

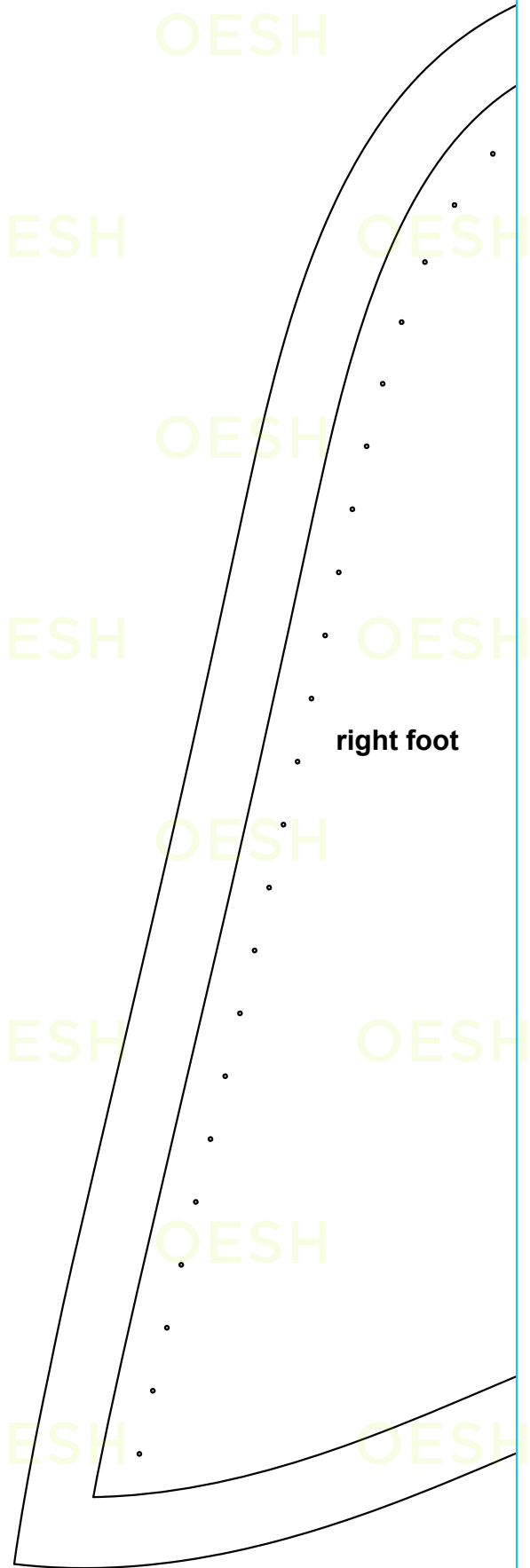
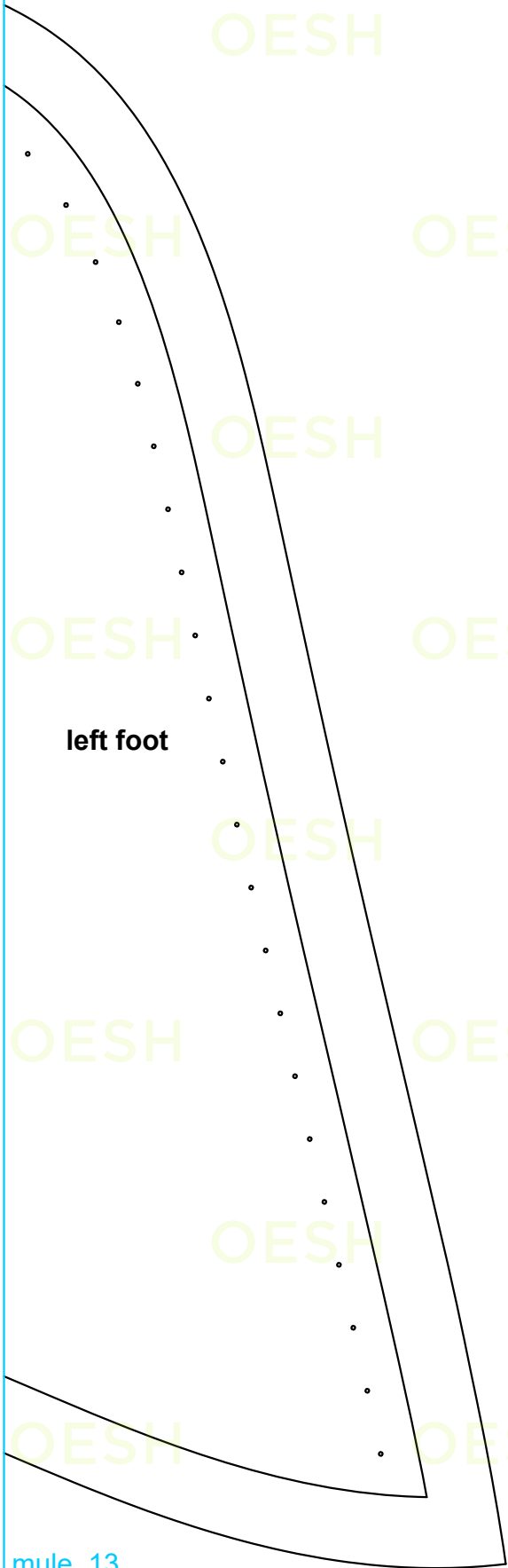




attach pages along line



attach pages along line



cut along line



sew here



cut here



right foot