

[Click on your shoe size and print labeled pages](#)

visit our **Customizing Page** for more information on the perfect fit and style for you

page 2 explains using the OESH Create Sole for the open toe pattern

size 5, page 3

size 6, page 4

size 7, page 5

size 8, page 6

size 9, page 7

size 10, pages 8-9

size 11, pages 10-11

size 12, pages 12-13

size 13, pages 14-15

[Enjoy making your OESH Creates!](#)

Please share your experience on our **Community Forum**



cut here
→

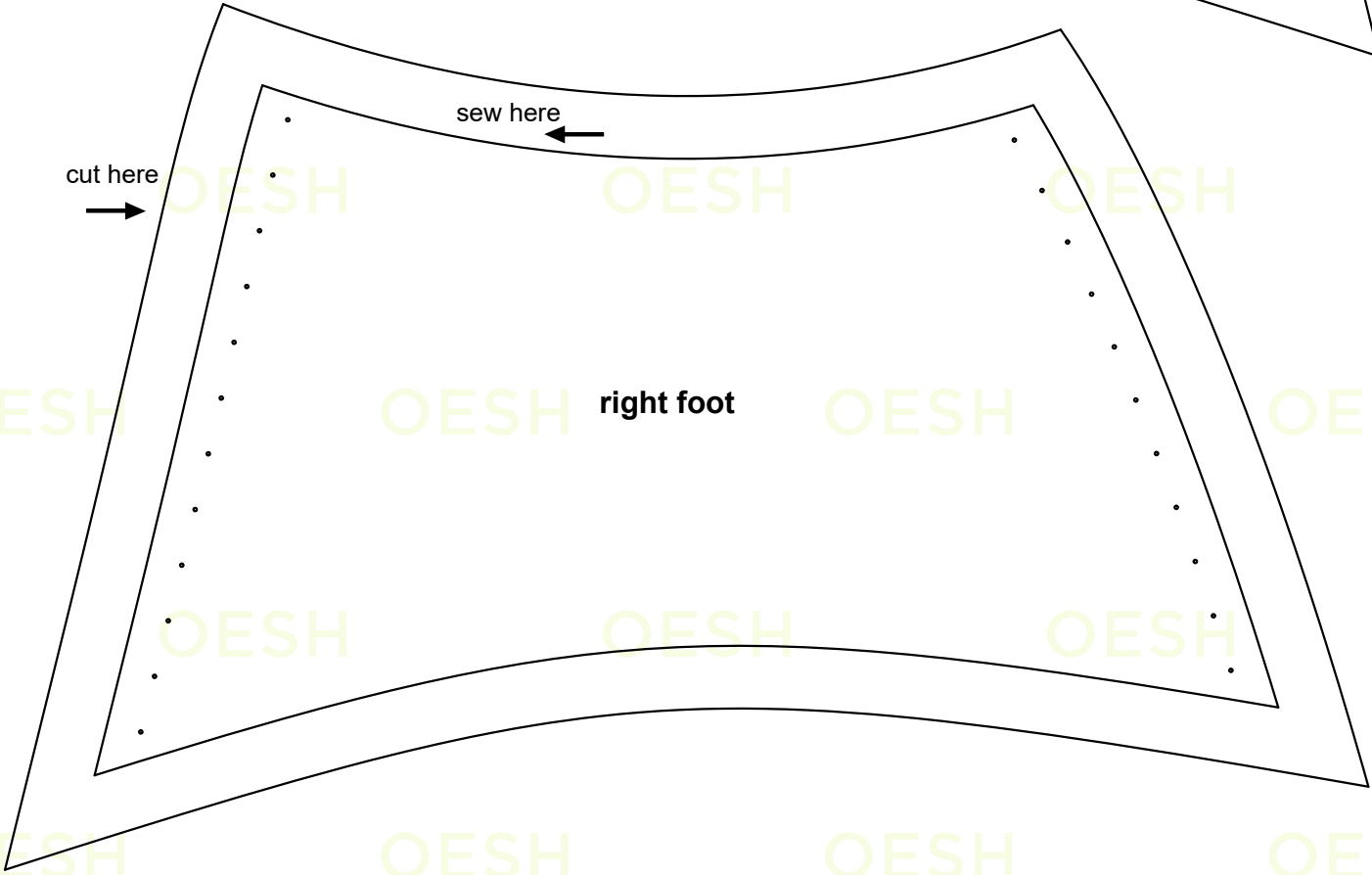
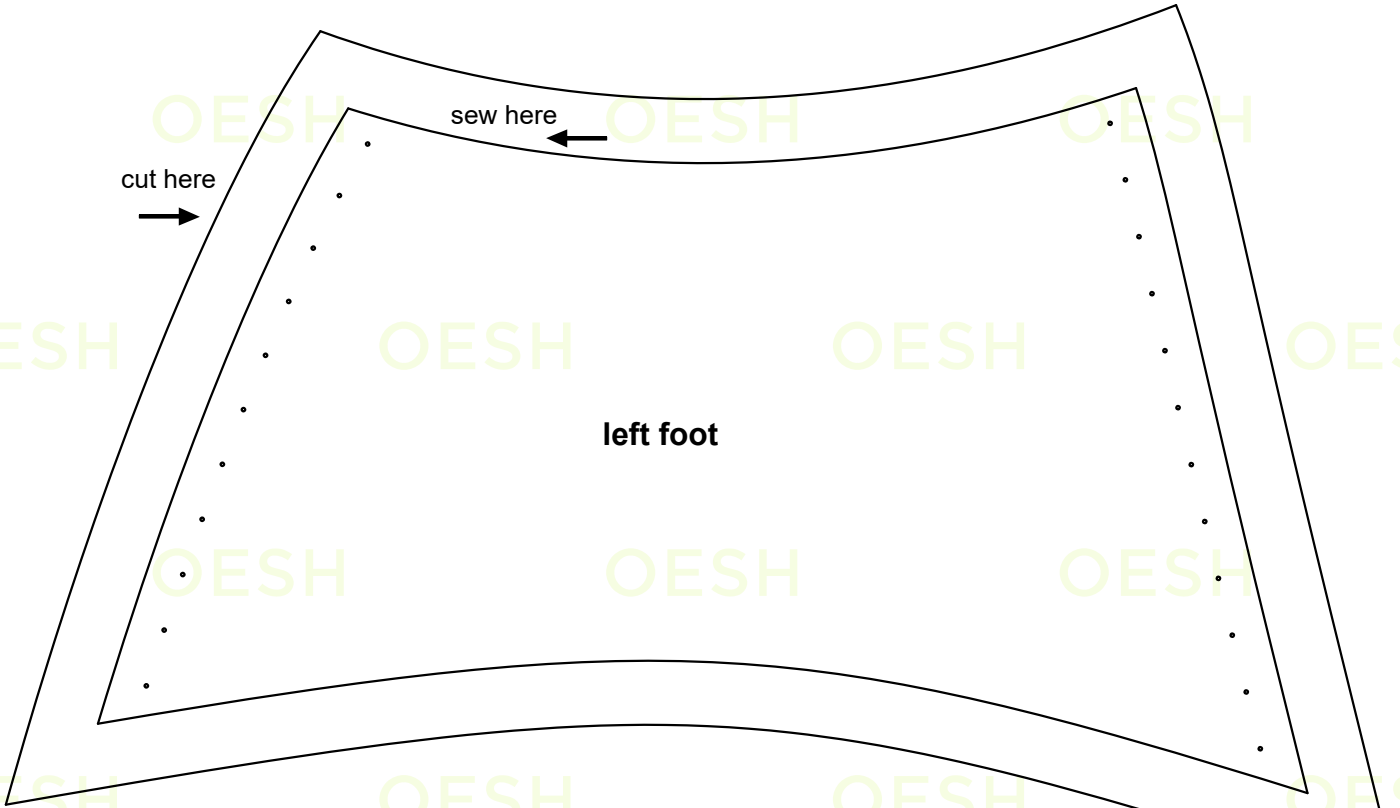
sew here
←

left foot

cut here
→

sew here
←

right foot



cut here



sew here



left foot

cut here



sew here



right foot

