

[Click on your shoe size and print labeled pages](#)

visit our **Customizing Page** for more information on the perfect fit and style for you

page 2 explains using the OESH Create Sole for the peep toe pattern

size 5, pages 3-4

size 6, pages 5-6

size 7, pages 7-8

size 8, pages 9-10

size 9, pages 11-12

size 10, pages 13-15

size 11, pages 16-18

size 12, pages 19-21

size 13, pages 22-24

[Enjoy making your OESH Creates!](#)

Please share your experience on our **Community Forum**

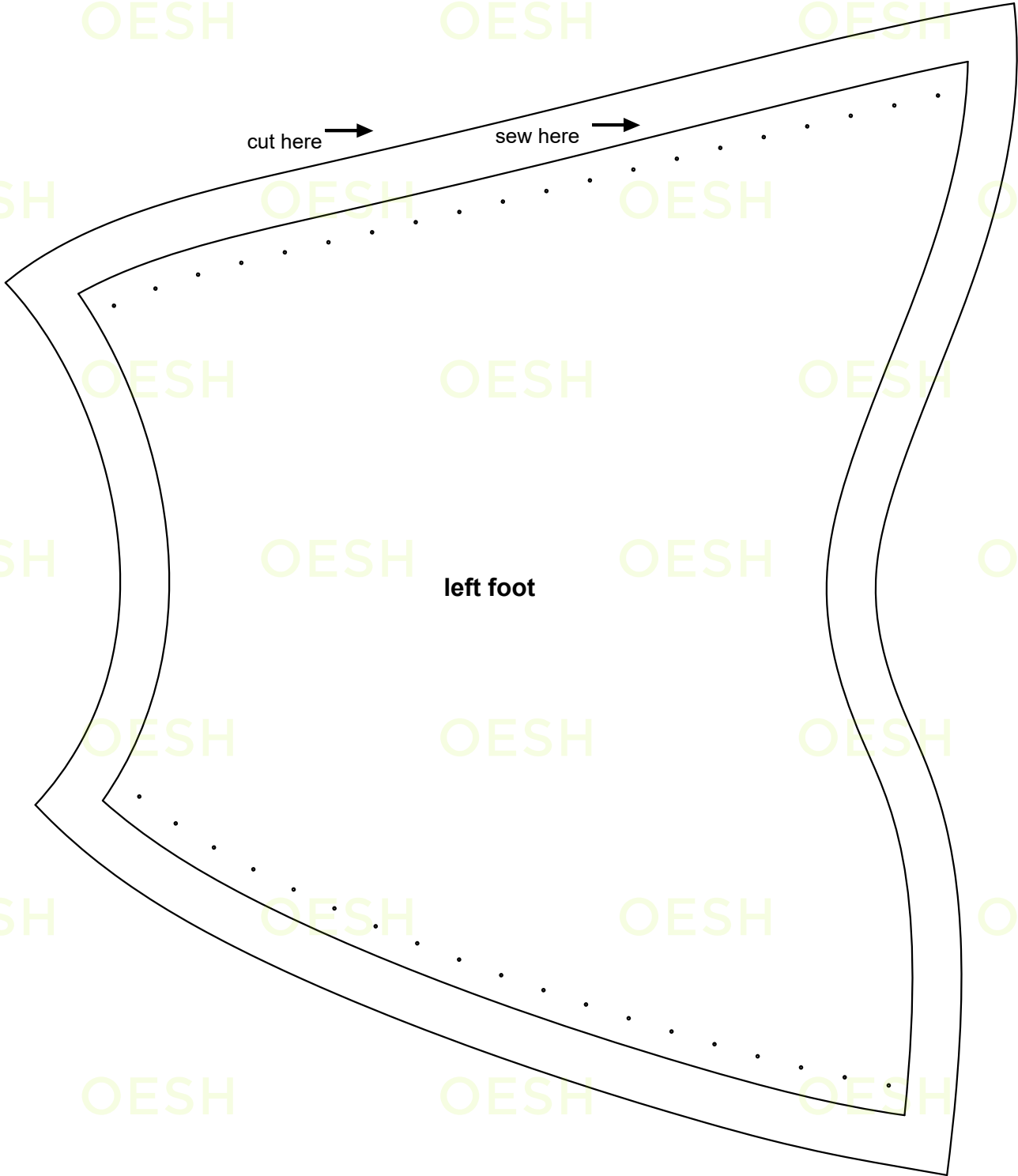
OESH
pause fabric here →

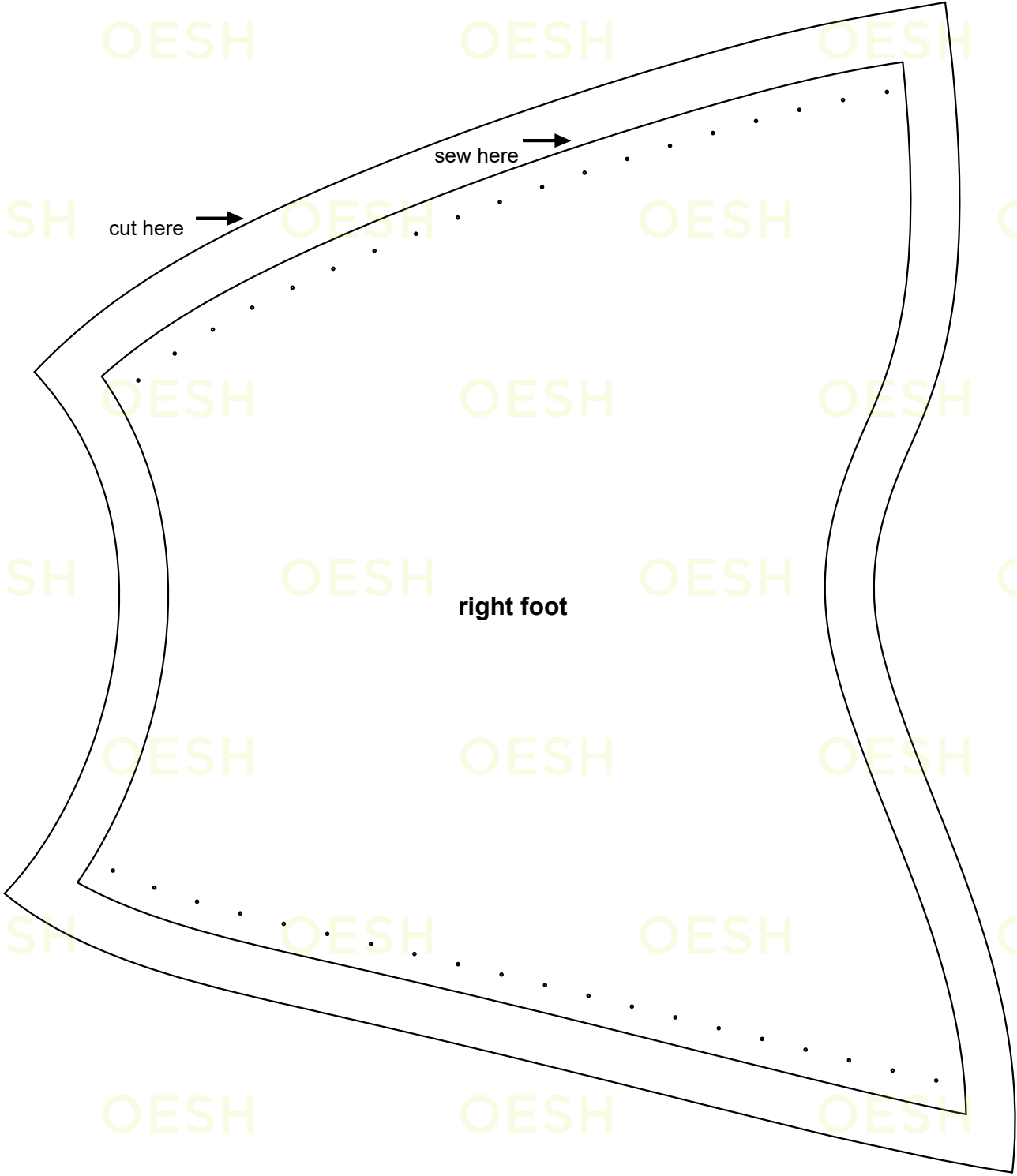
OESH
← pick up here

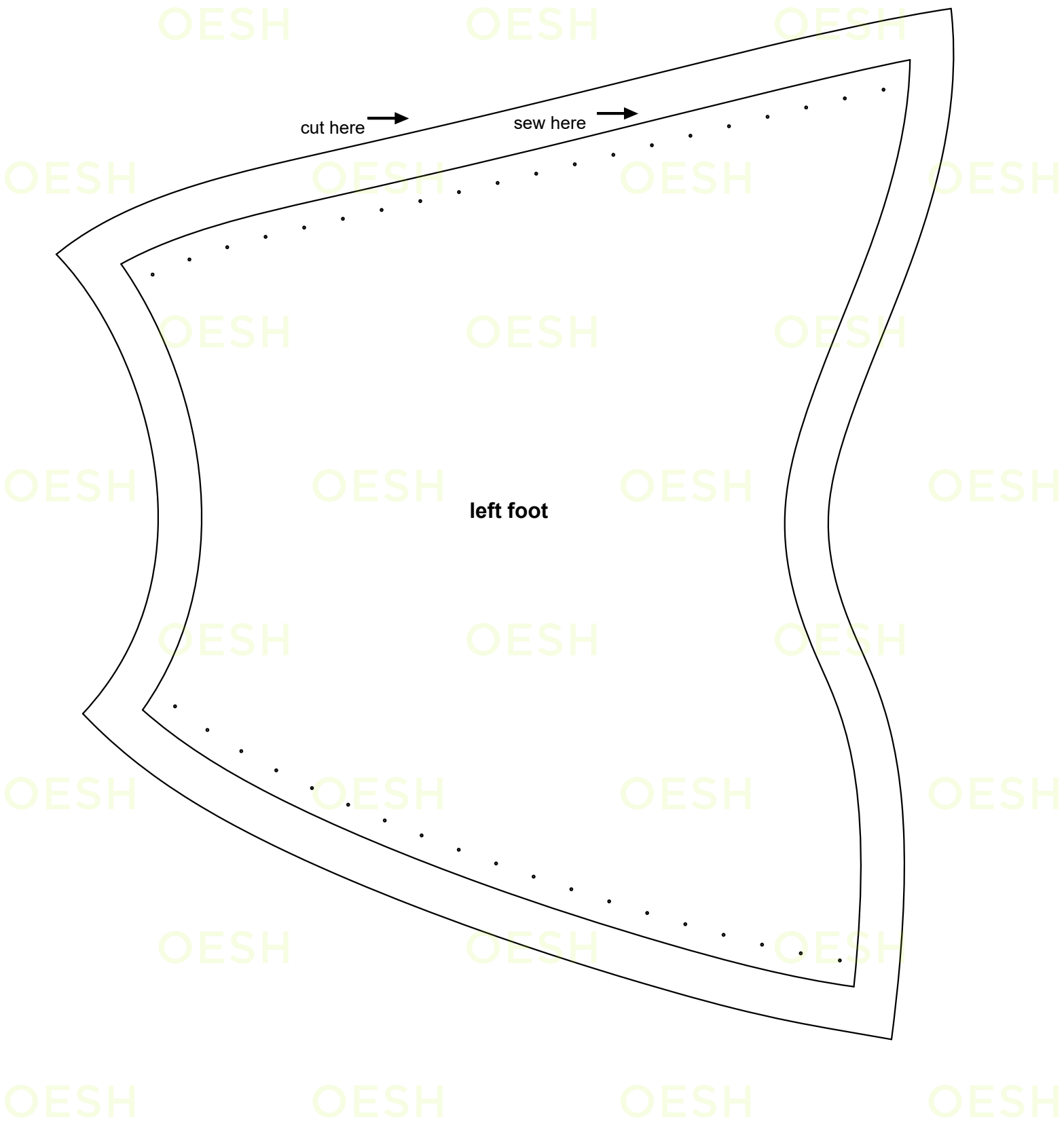
OESH
start here →

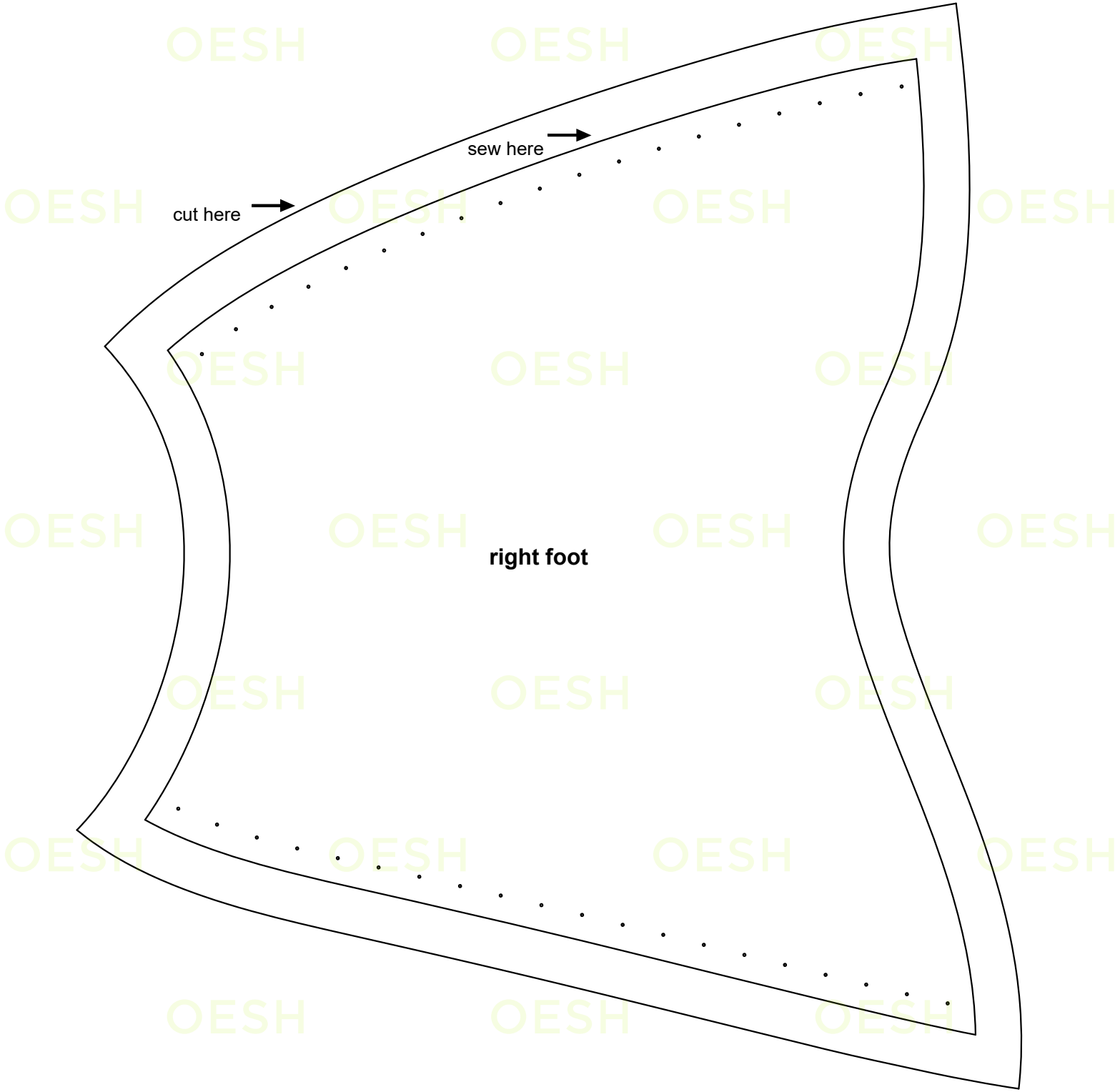
OESH
← end here

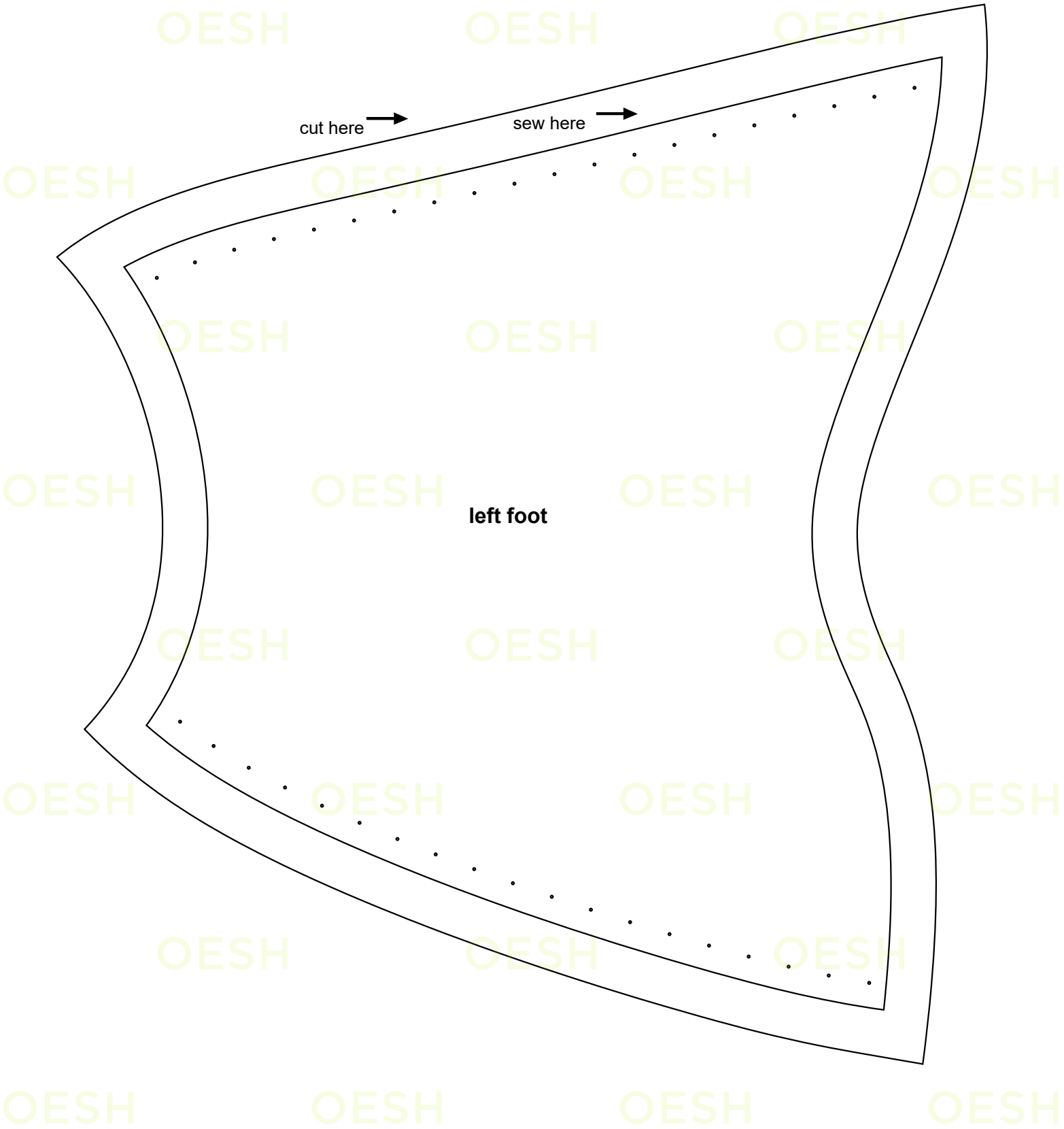


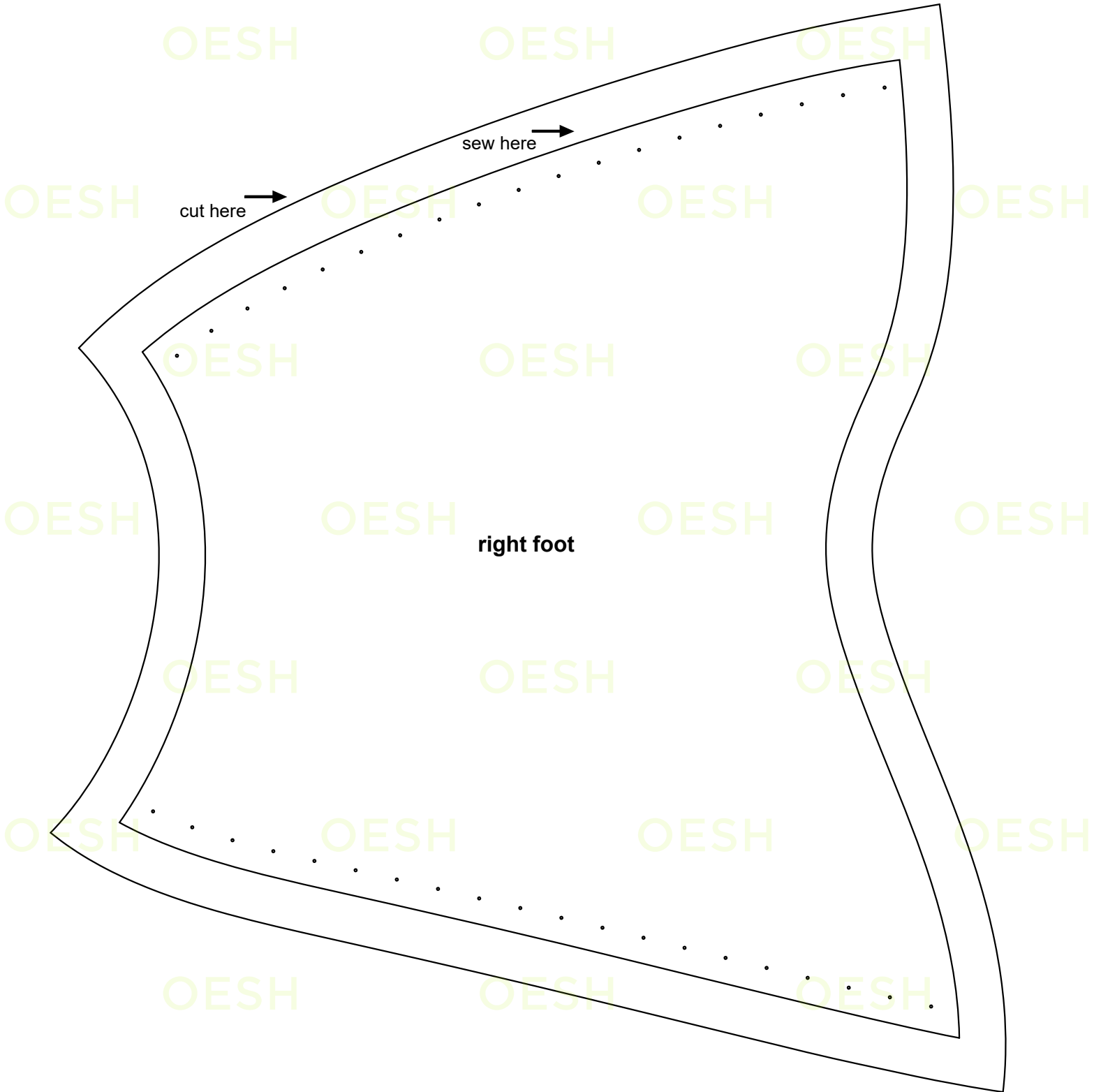


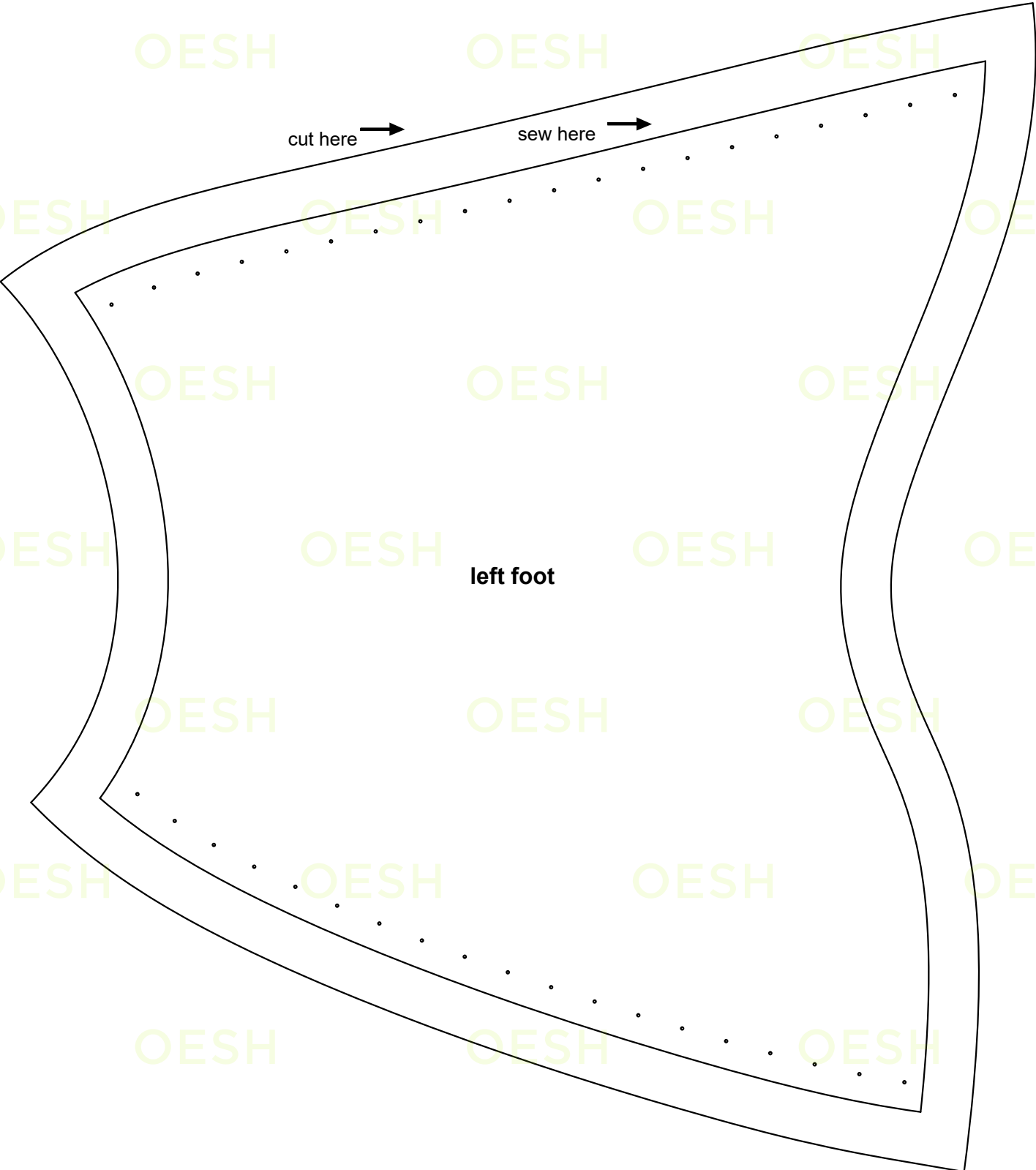


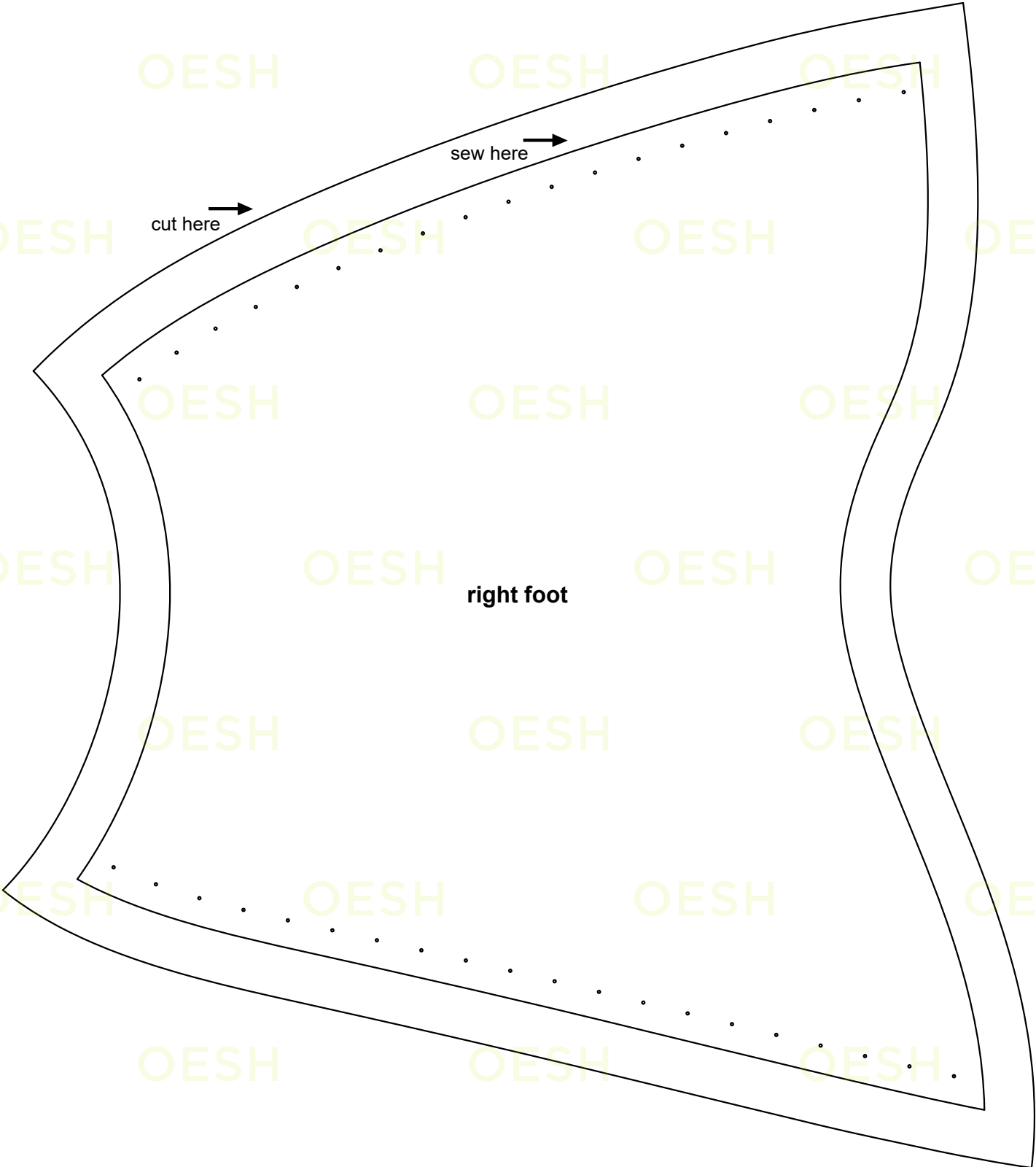


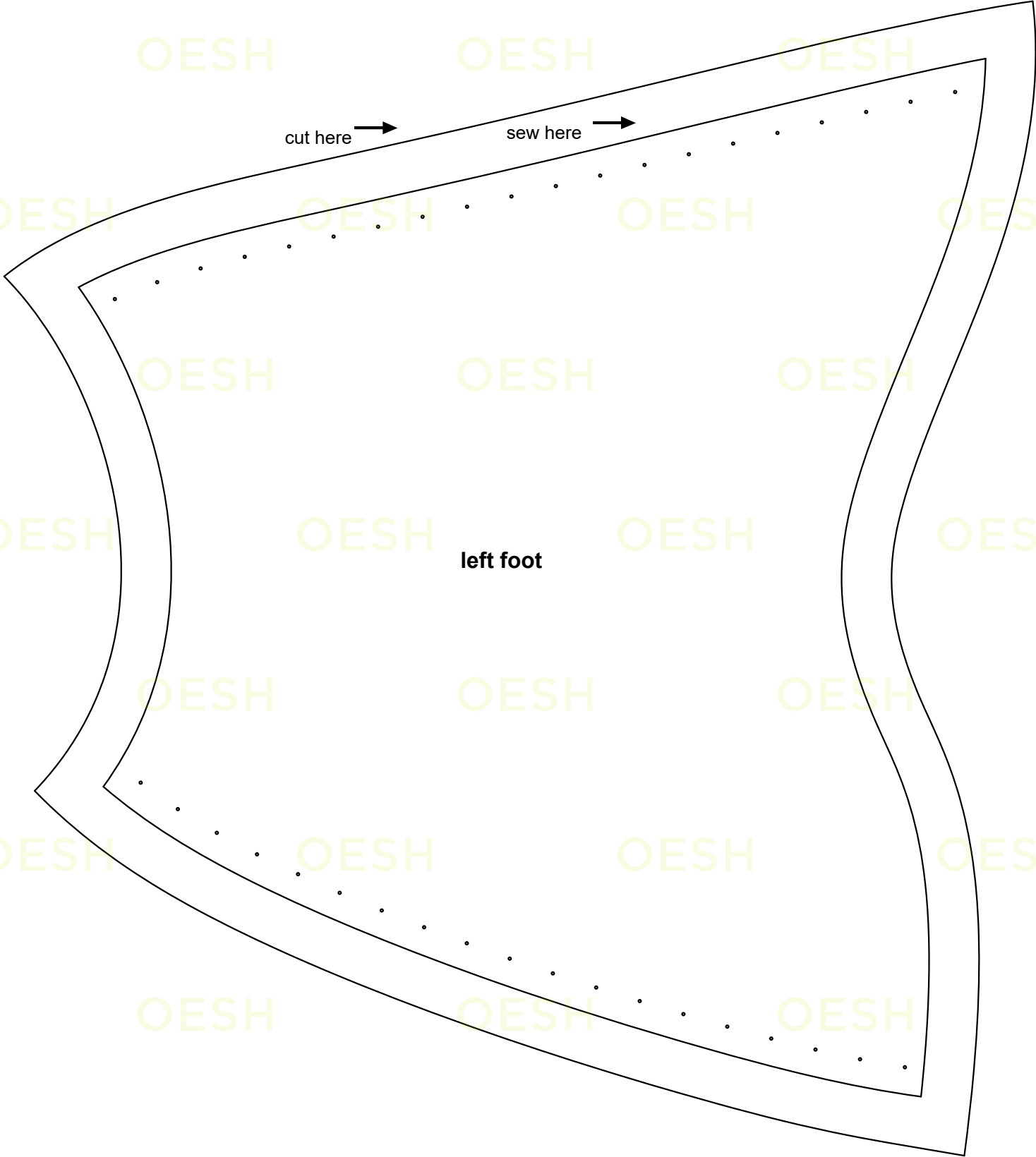


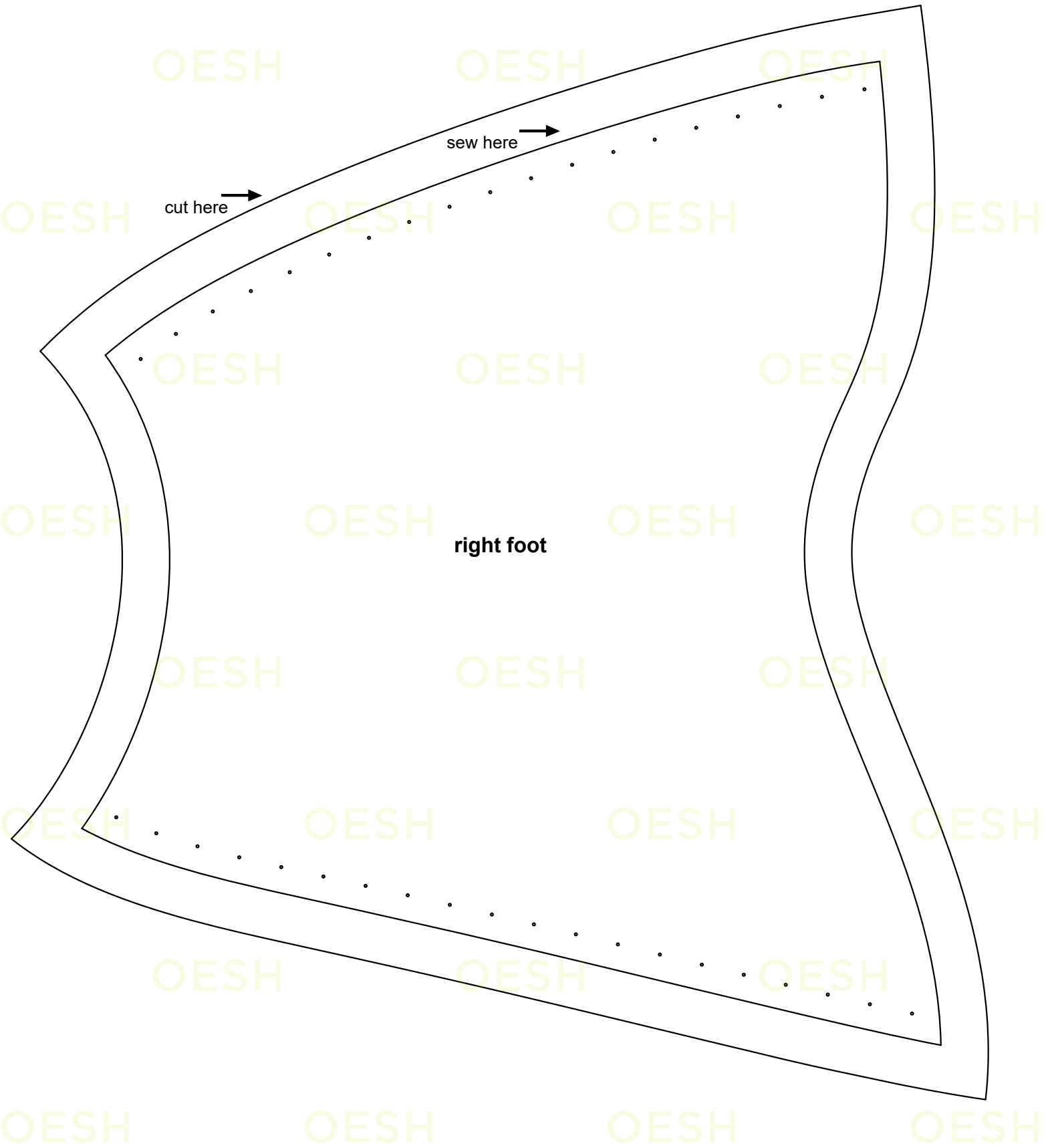


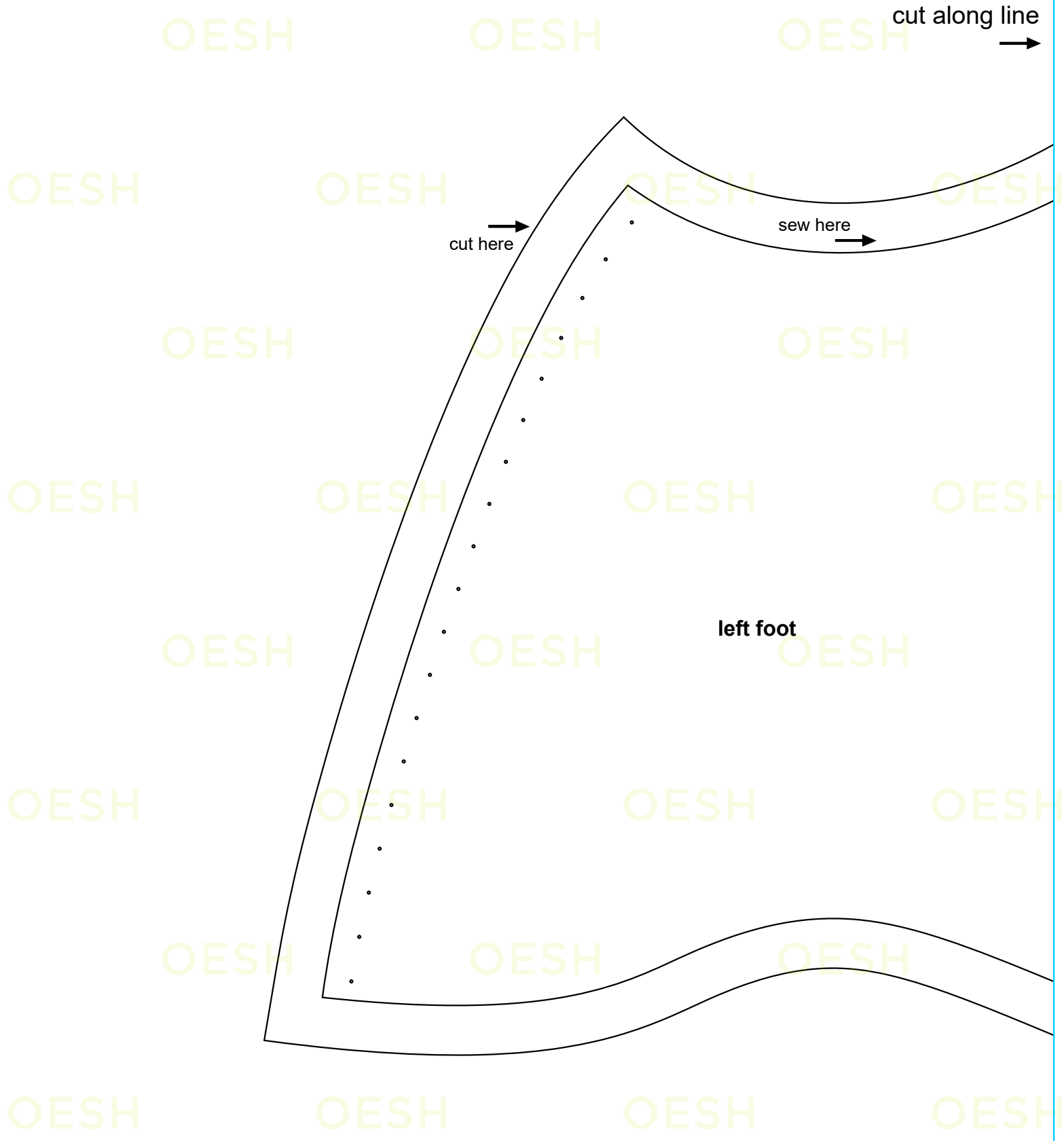








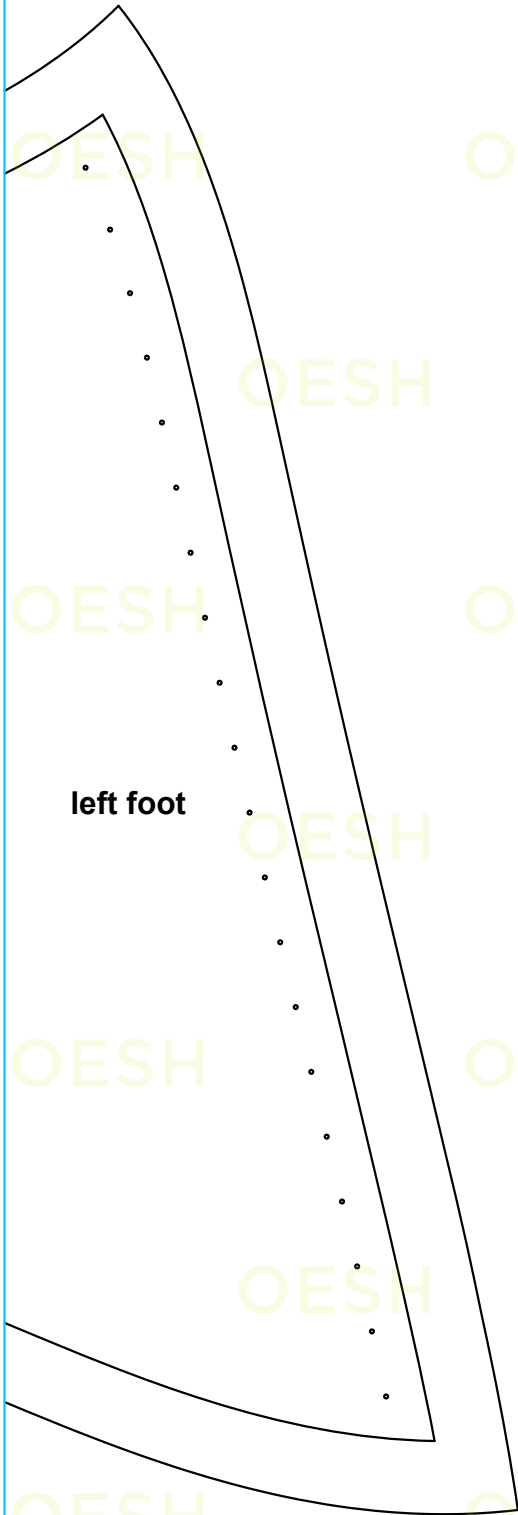




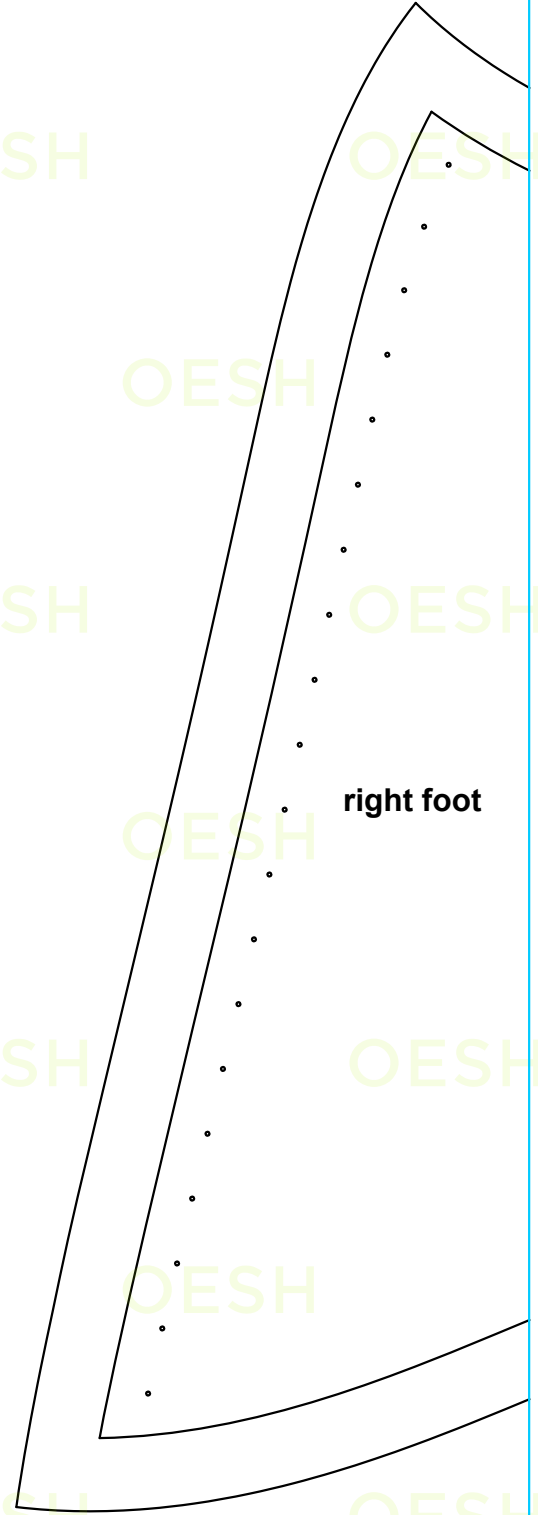
attach pages along line



attach pages along line



left foot



right foot

cut along line



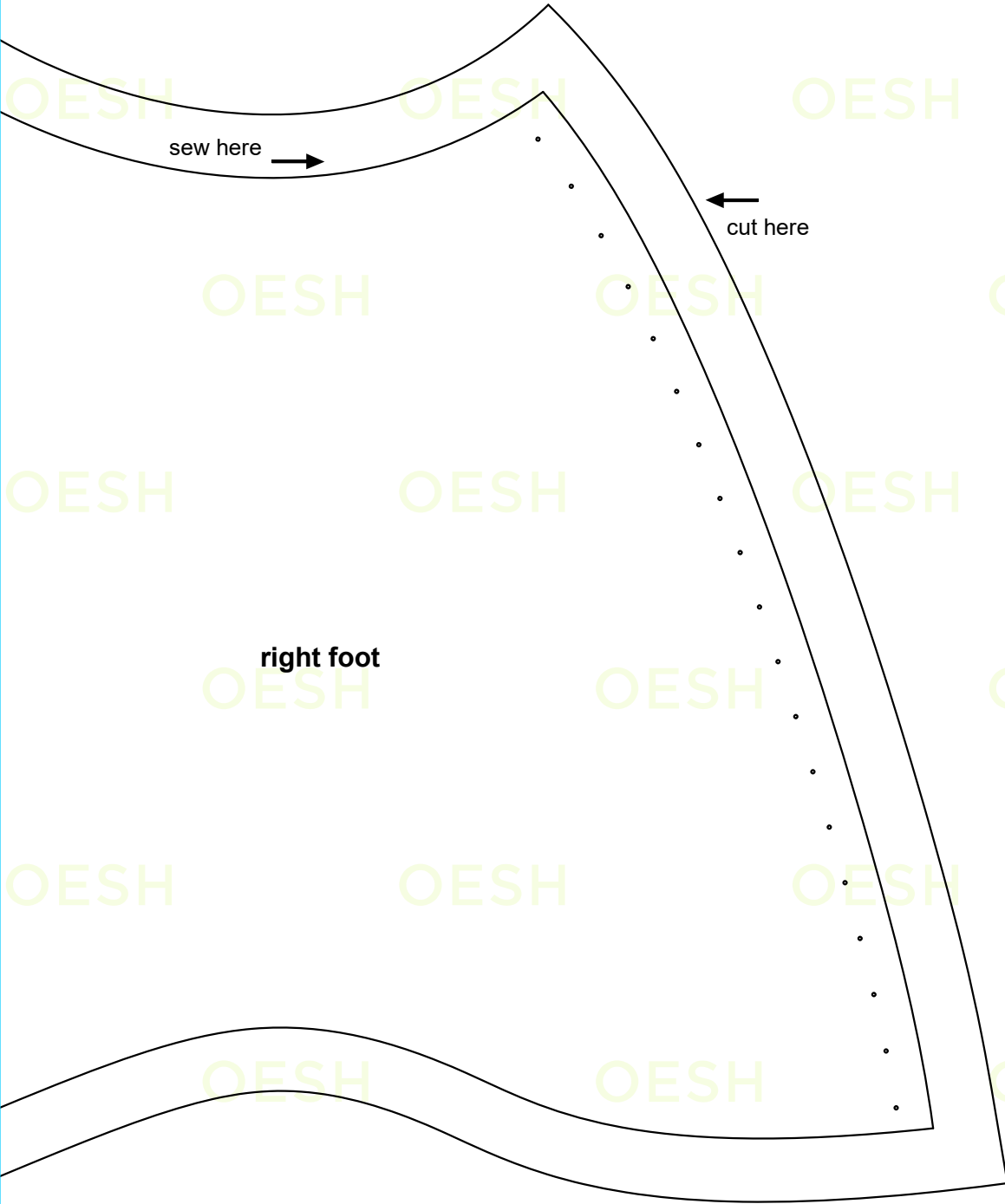
sew here

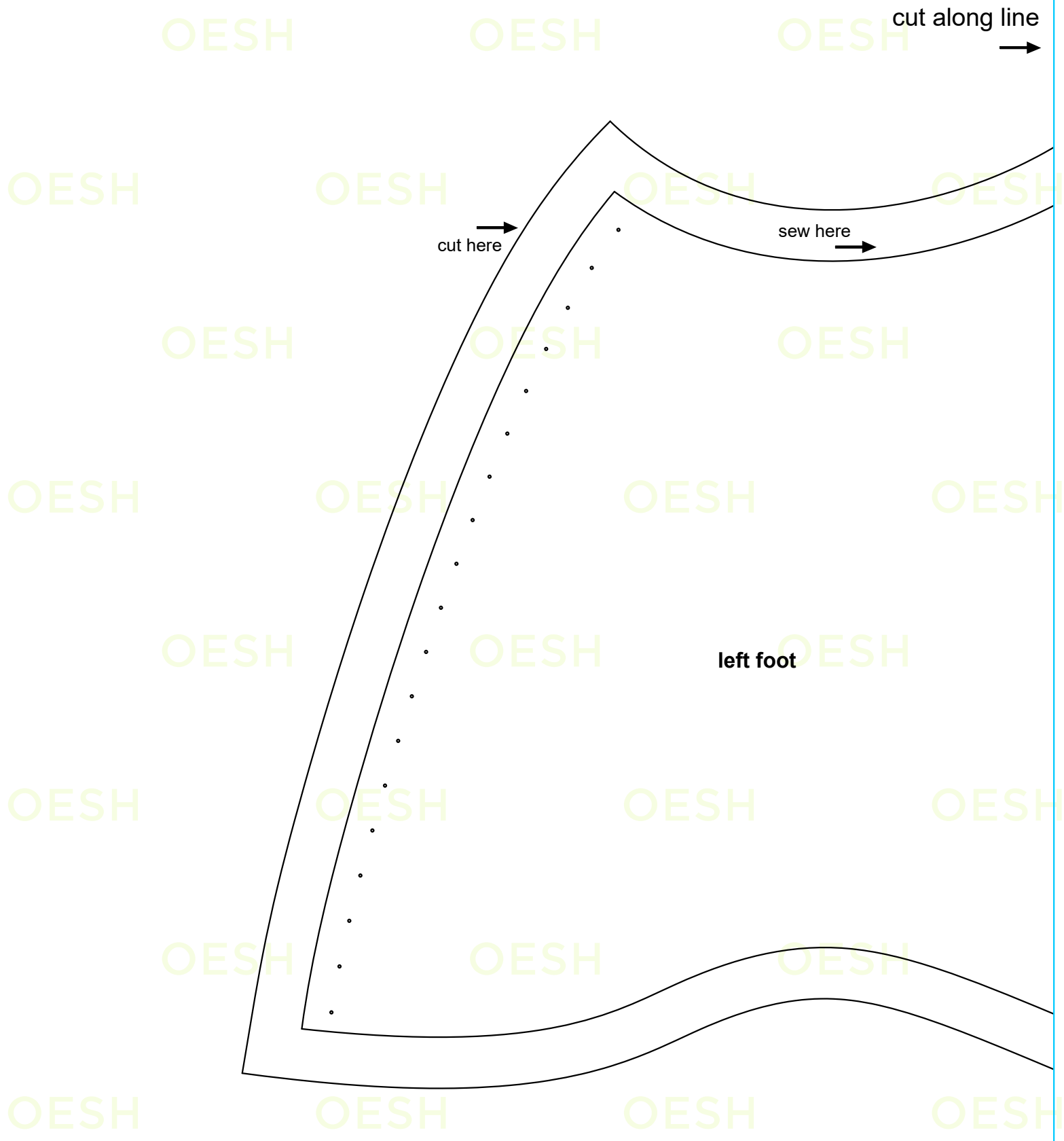


cut here

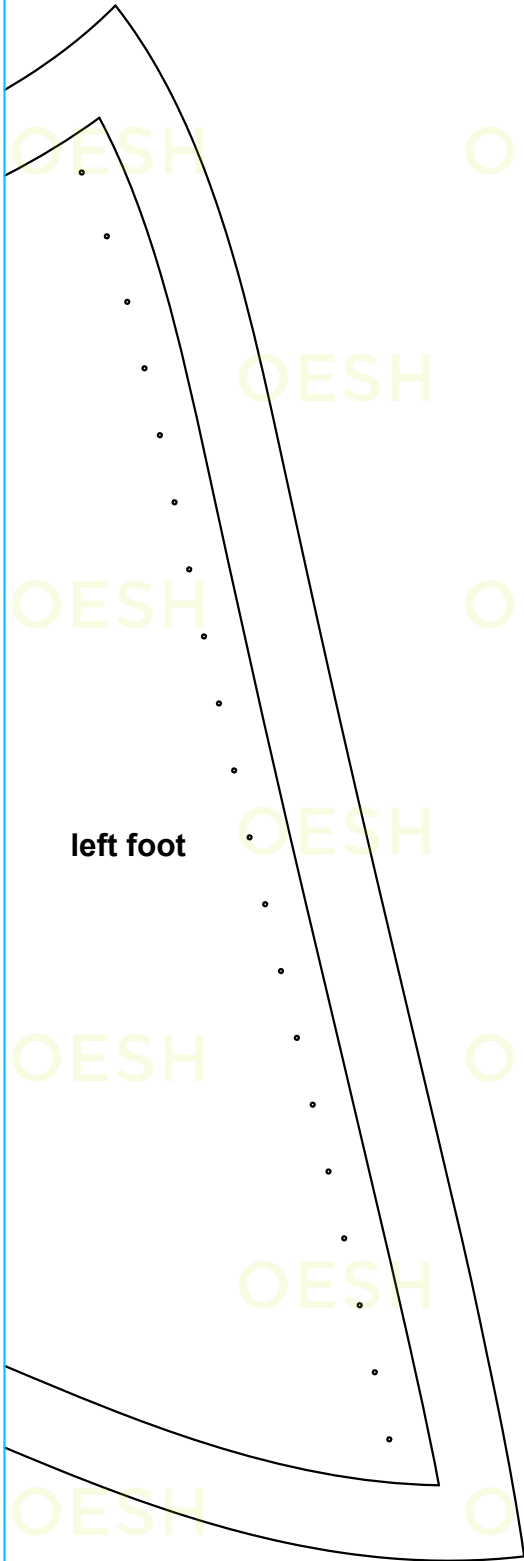


right foot



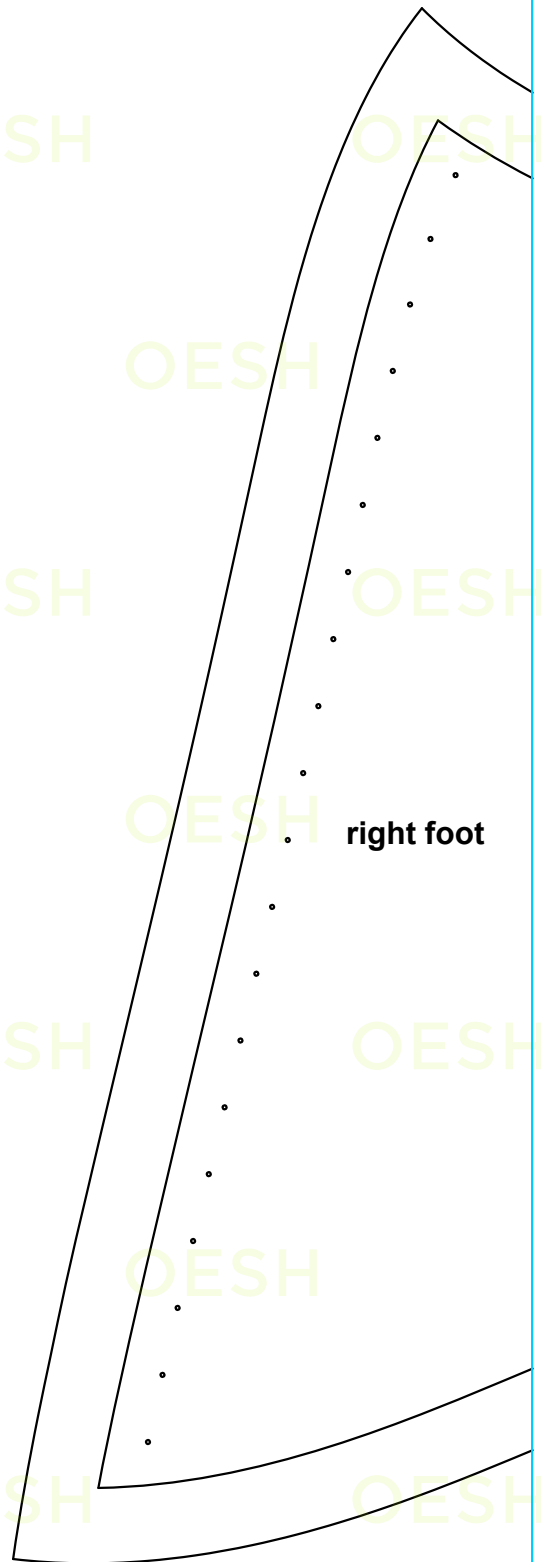


attach pages along line



left foot

attach pages along line



right foot

cut along line



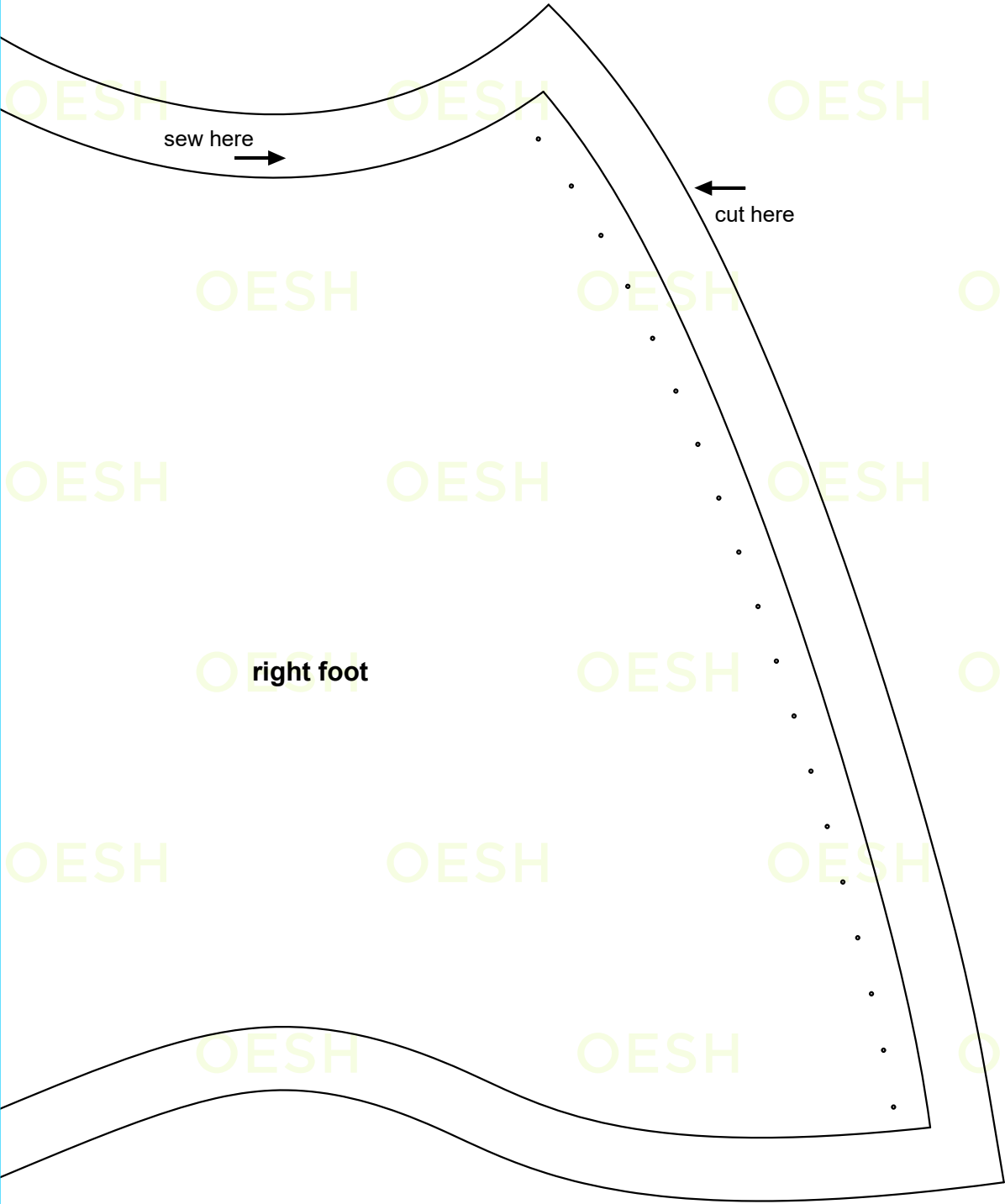
sew here

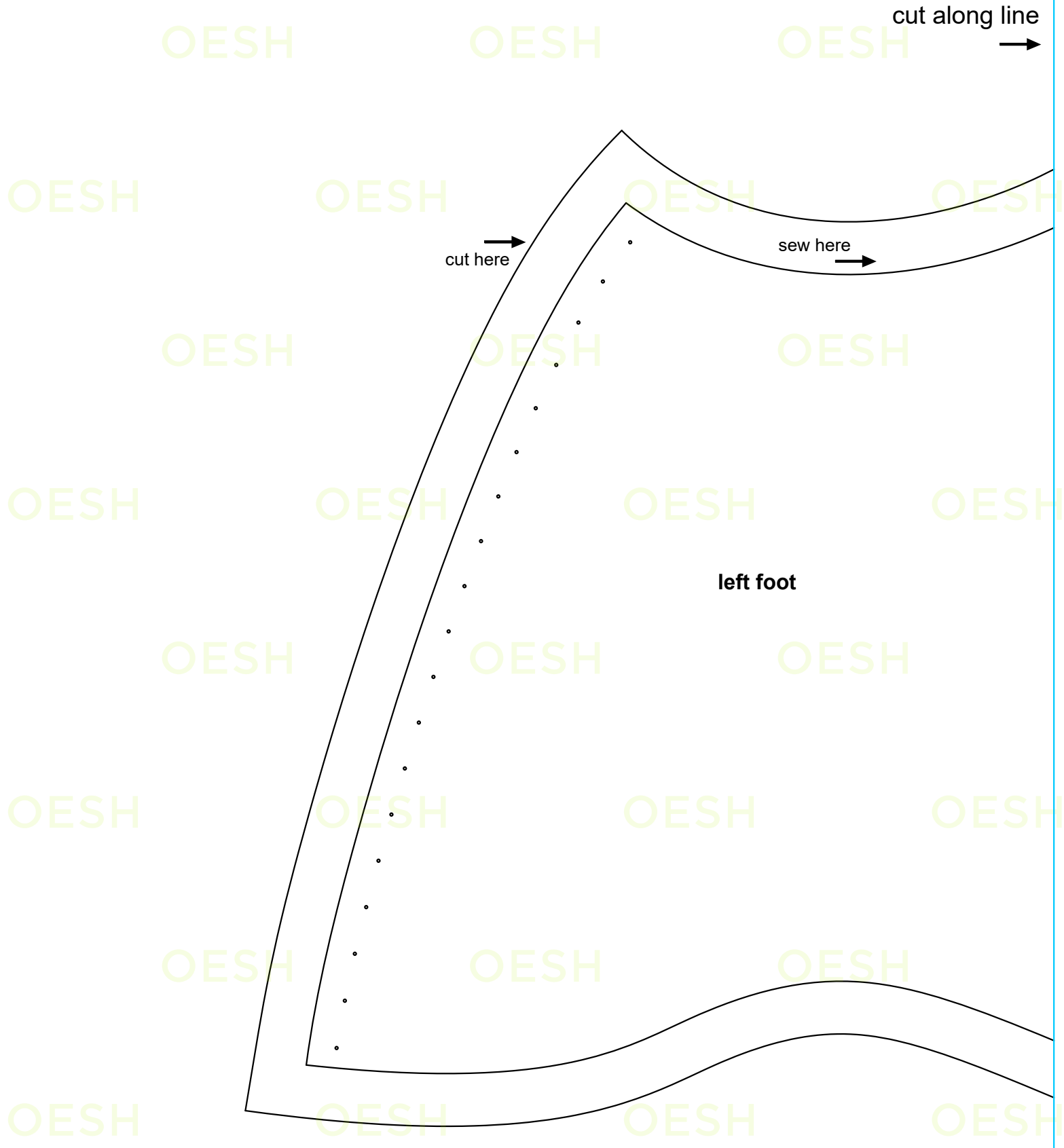


cut here



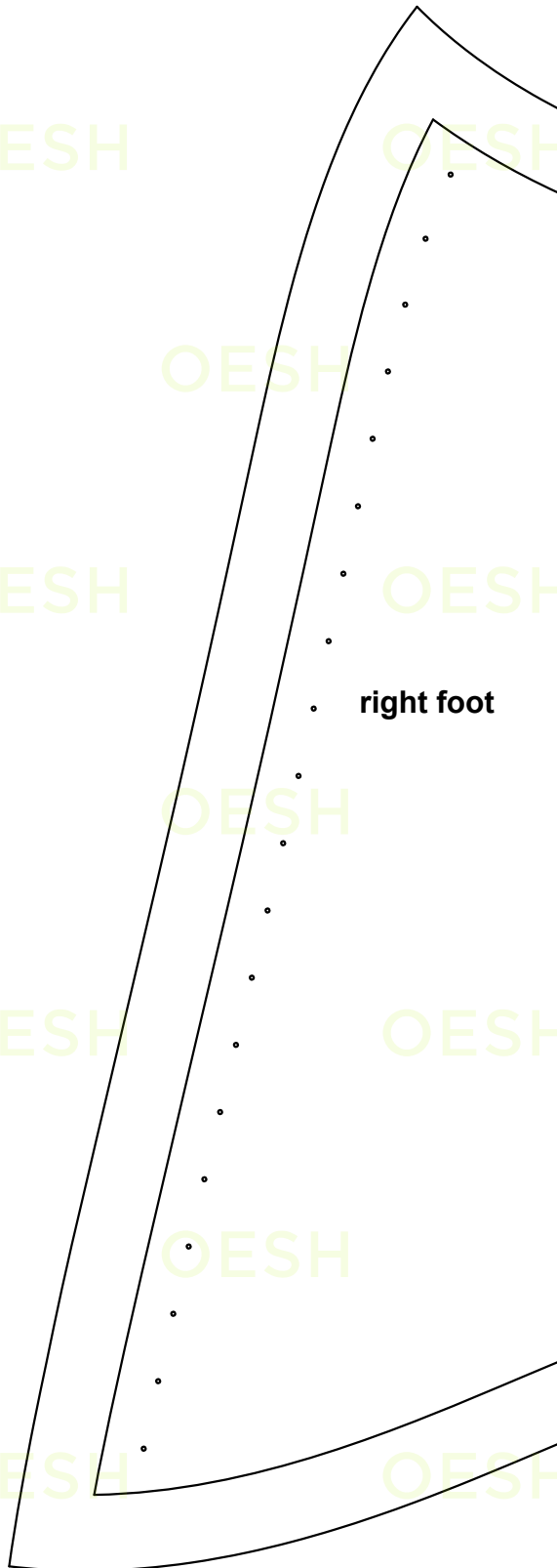
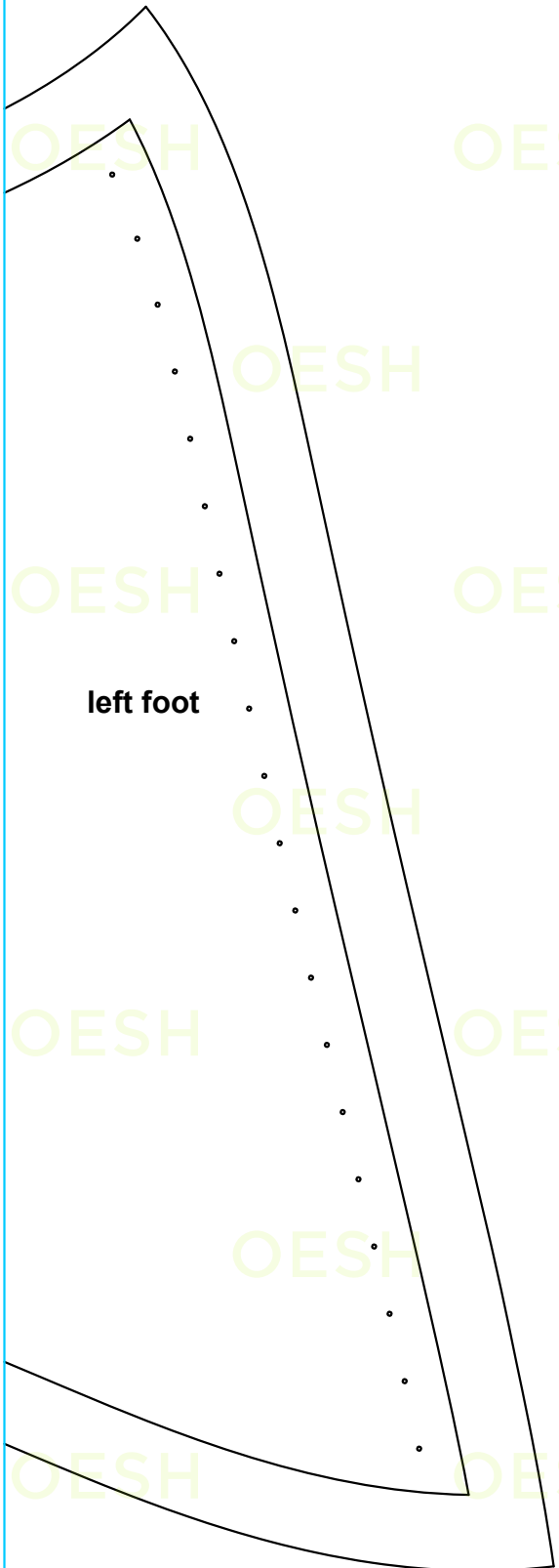
right foot





attach pages along line ←

attach pages along line →



cut along line



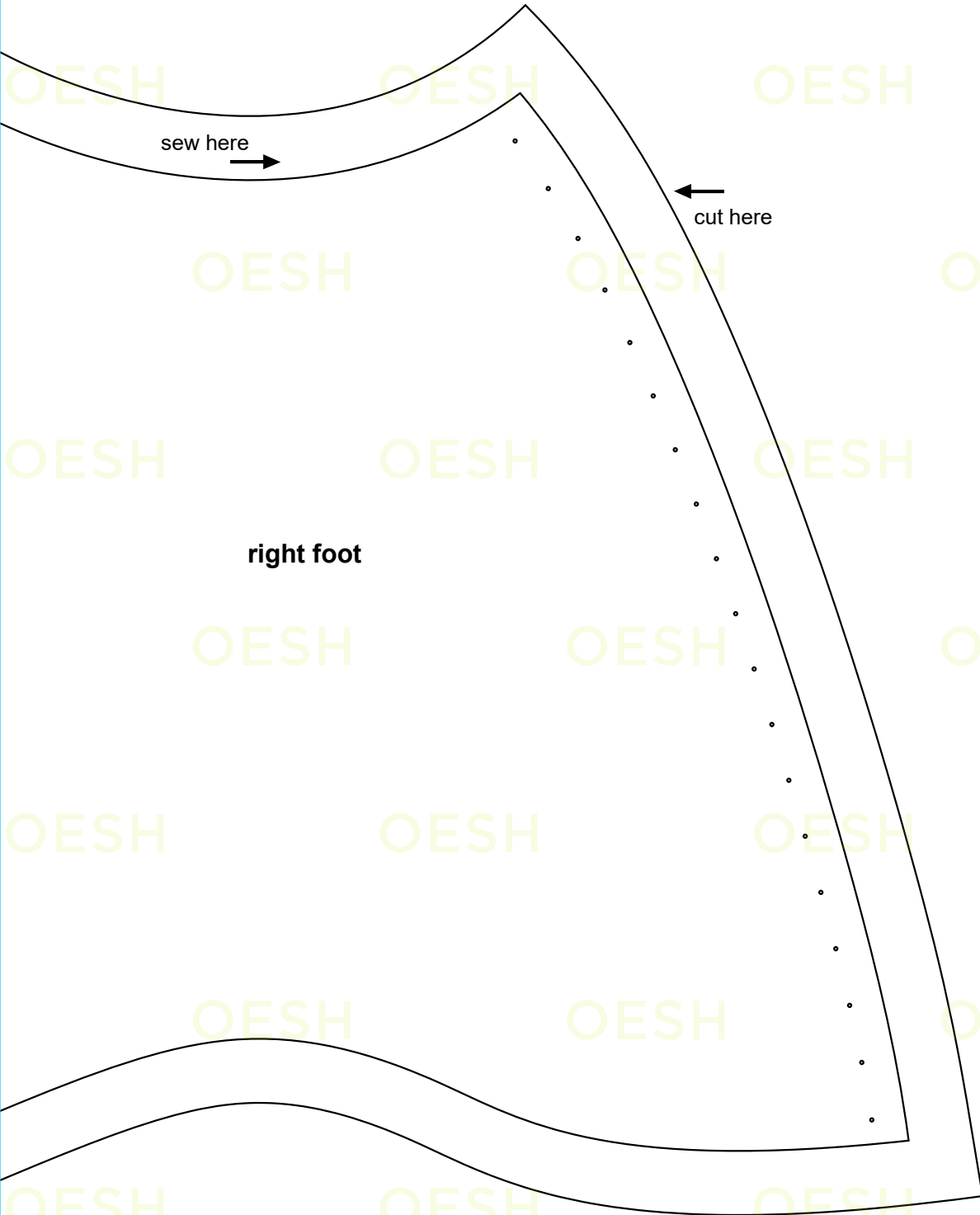
sew here

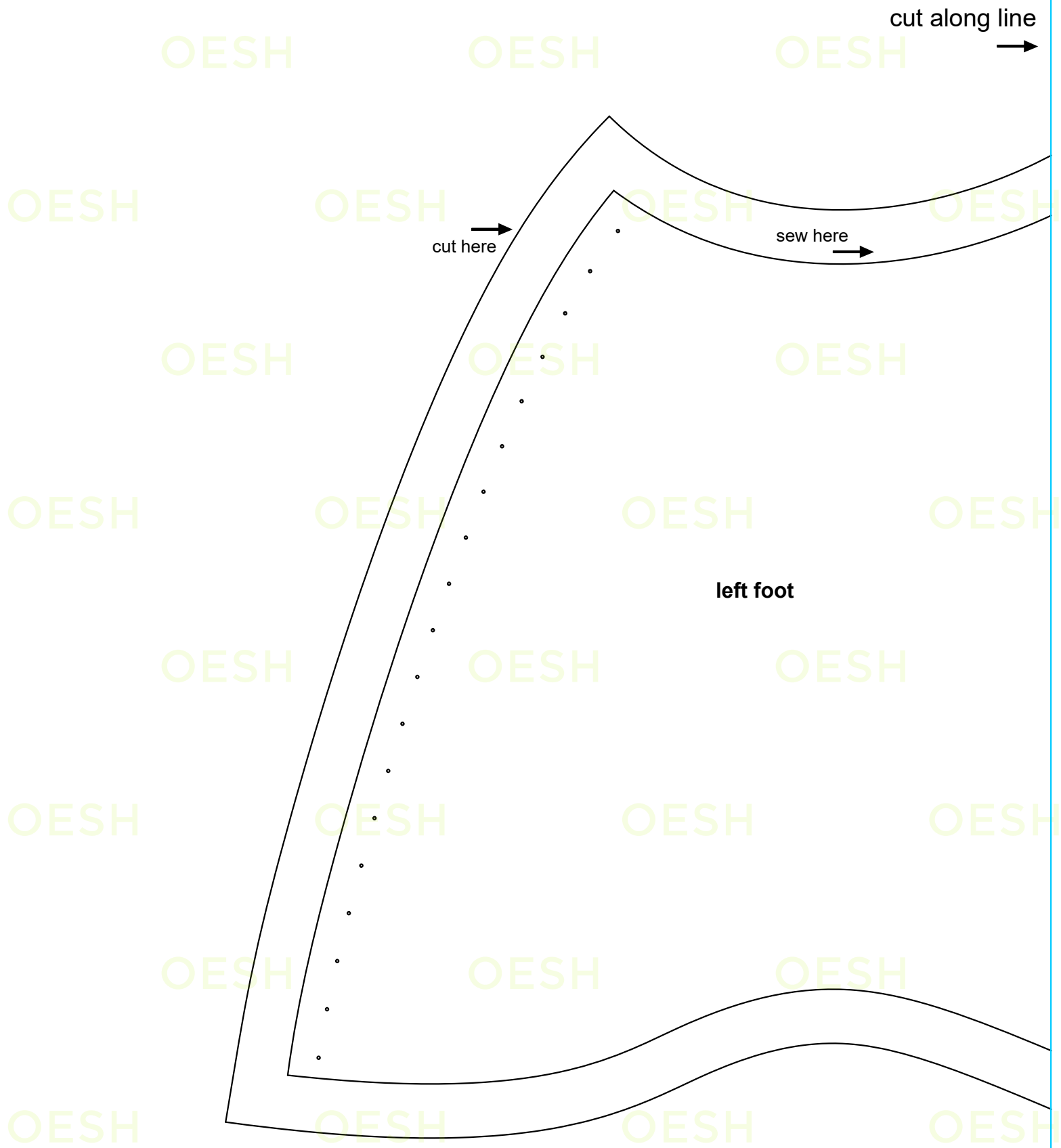


cut here



right foot

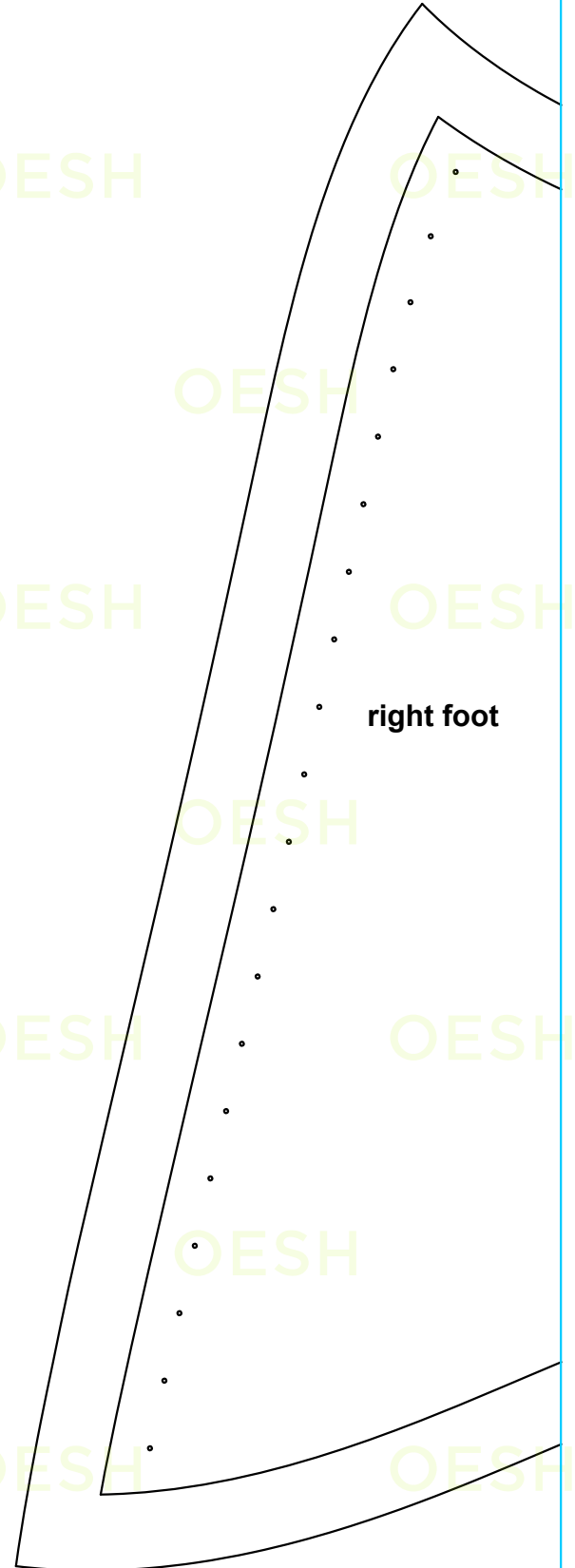
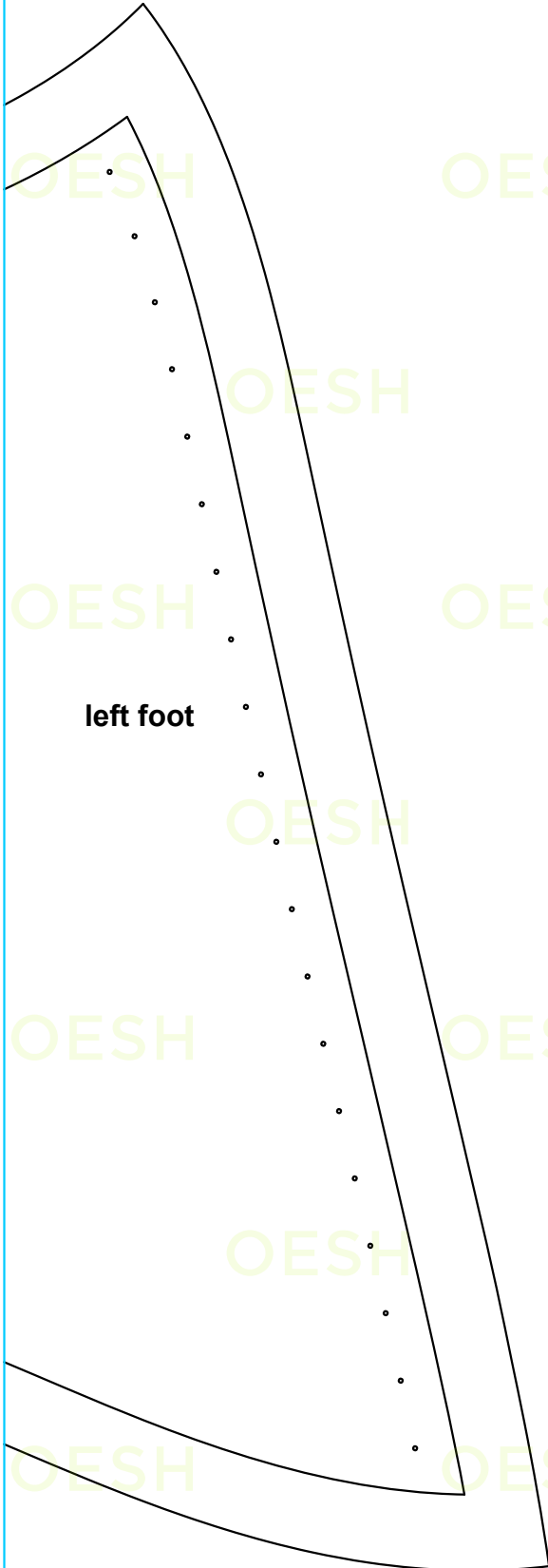




attach pages along line



attach pages along line



cut along line



sew here



cut here



right foot

