

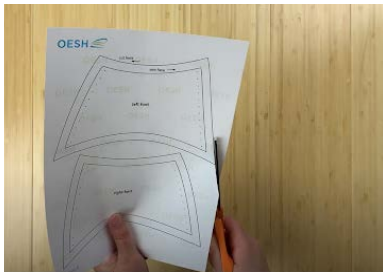
You will need:

- OESH [Create Sole](#) for your size
- [PDF pattern](#) for your size, printer and tape
- [Fabric/material](#) of your choosing
- Lining fabric
- Sewing machine and thread
- Sewing pins, fabric scissors, and an iron
- Soft tip stick (chopstick or crochet hook)
- Thick sewing needle
- 8 feet of [waxed thread](#)



For further details, please refer to the [tutorial video](#)

1. Cut out each pattern along the labeled cut line



2. Pin the patterns to the fabric and cut along the labeled cut line again (repeat for the other shoe)



3. Cut the same pieces for the shoe lining (we re-used an old bed sheet)



4. Flip to pin both fabrics with the fronts facing each other



5. Mark 2 inches to stay unsewn to turn the fabric out later  
(we recommend these spots to be the most invisible)



6. Prepare to sew your toe and heel pieces, allowing a 3/8" seam  
(keeping the edge of the fabric on the 3/8" line)



You should end up with this 2 inch opening



7. Trim all the corners and cut off extra fabric on both pieces, except for at the 2 inch opening



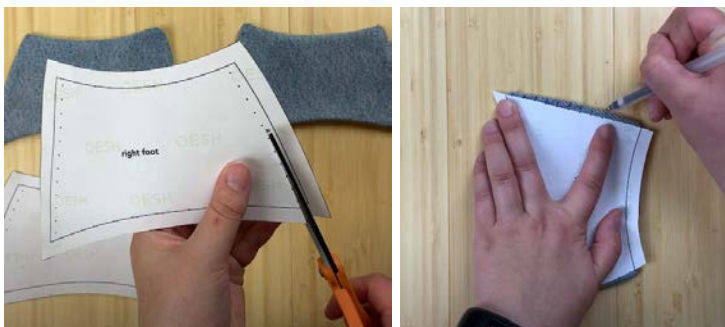
8. Turn both pieces inside out (use a crochet hook or chopstick to help push out the corners)



9. Iron the edges and fold in the extra 2 inch tabs. Iron again to create an edge, and sew up the gaps (repeat for the other shoe)



10. To mark the stitching holes, cut along the line of holes on the pattern. Line up the top and bottom sew line with your fabric, and mark the holes with a pen (these marks will mostly be covered with stitching)



### Time to stitch to the OESH Sole!

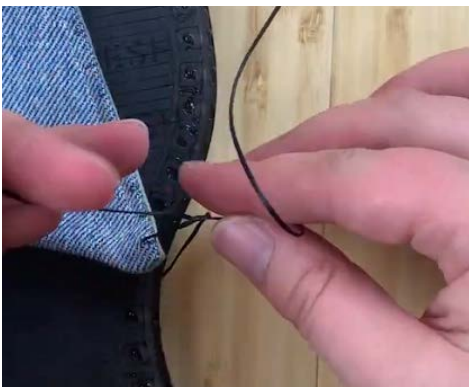
11. Cut about 8 feet of waxed thread and thread a thick sewing needle
12. Match the straight fabric edge with the inside of the sole  
We will start stitching at the inside middle circle hole



13. Stitch through the edge of the sole, then through the first marked hole of the fabric  
Pull your needle through, leave about 6"



14. Double knot the tail and stitching thread





Now, we start the blanket stitch!

15. Hold your stitching thread to the left of the holes, pierce through the next hole in the OESH Sole and through the next marked hole in the fabric. Pull your thread through and tighten



16. Continue stitching along the marked holes (keep your stitches on top of the fabric)



17. The top edge will pause 2 holes down from the next marked circle hole  
Continue stitching just the OESH Sole, keeping track of the next circled hole



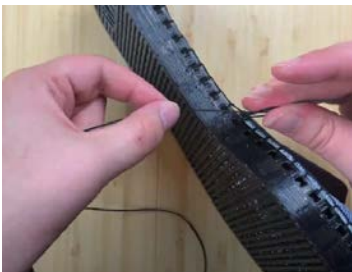
18. Pick the fabric up 2 holes before the circled hole. Continue stitching to the other middle circled hole



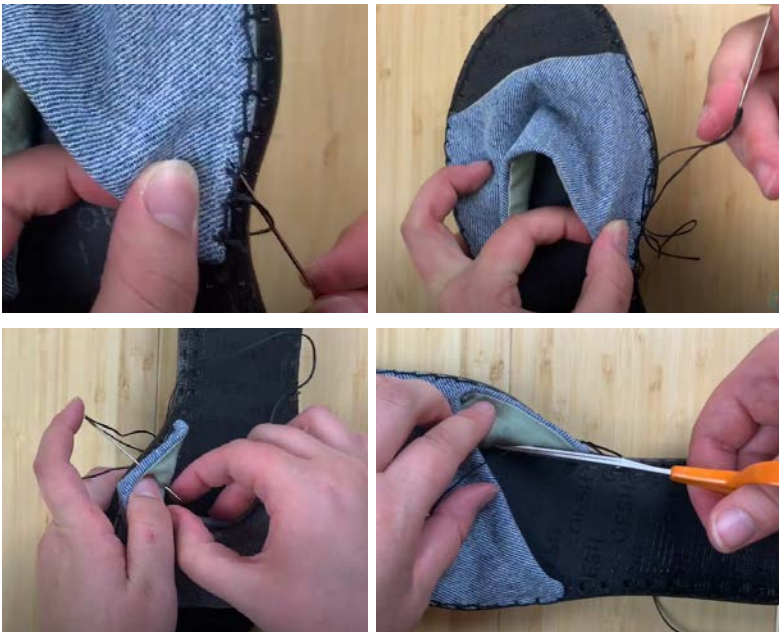
19. Continue stitching just the OESH Sole, up to the last available hole



20. Double knot the two thread ends together



21. For a more secure finish, thread the 2 end strands under a stitch then through to the inside of the shoe, and knot. Trim both ends



Enjoy your new OESH Create Open Toes!  
Made by you.